

## 验证报告

编号: TAOEC26003847302

日期: 2026年05月08日

第1页, 共8页

客户名称: 江苏鼎智智能控制科技股份有限公司  
客户地址: 江苏省常州经济开发区潞城街道潞横路 2850 号

样品名称: 直流有刷电机  
测试基本型号: 16ZYCC40-1SZ  
客户参考信息: 12/16/22/28/36/42/57/60/86/110/130  
以上样品及信息由客户提供。

SGS 工作编号: SHP26-012627  
样品接收时间: 2026年04月20日  
验证周期: 2026年04月20日 ~ 2026年04月30日  
验证要求: 参考欧盟 RoHS 指令 2011/65/EU 的修正指令(EU) 2015/863。  
验证方法: 见后续页。  
验证程序和结果: 见后续页。

## 检测结果总结:

检测项目	结论
欧盟 RoHS 指令 2011/65/EU 附录 II 的修正指令(EU) 2015/863-铅、汞、镉、六价铬、多溴联苯 (PBB)、多溴二苯醚 (PBDE)、邻苯二甲酸二(2-乙基己基)酯 (DEHP)、邻苯二甲酸丁苄酯 (BBP)、邻苯二甲酸二丁酯 (DBP)和邻苯二甲酸二异丁酯 (DIBP)	符合

通标标准技术服务(青岛)有限公司  
授权签名

孙媛媛

Alice Sun 孙媛媛  
批准签署人

Scan to see the report



1BF4F0AD



Unless otherwise agreed in writing, this document is issued by the Company subject to its General Conditions of Service printed overleaf, available on request or accessible at <https://www.sgs.com/en/Terms-and-Conditions>. Attention is drawn to the limitation of liability, indemnification and jurisdiction issues defined therein. Any holder of this document is advised that information contained hereon reflects the Company's findings at the time of its intervention only and within the limits of Client's instructions, if any. The Company's sole responsibility is to its Client and this document does not exonerate parties to a transaction from exercising all their rights and obligations under the transaction documents. This document cannot be reproduced except in full, without prior written approval of the Company. Any unauthorized alteration, forgery or falsification of the content or appearance of this document is unlawful and offenders may be prosecuted to the fullest extent of the law.

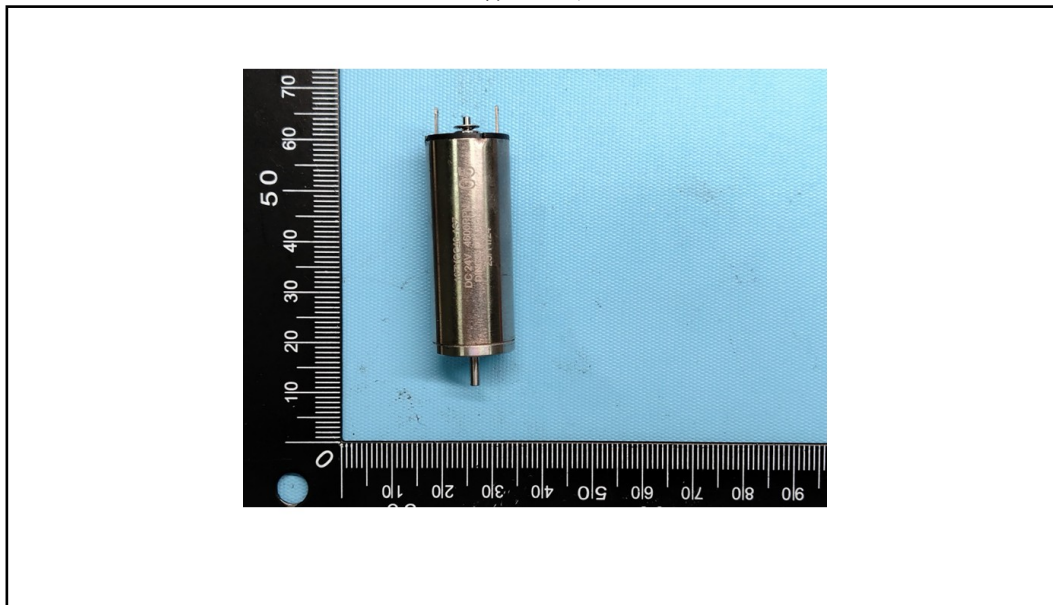
Attention: To check the authenticity of testing / inspection report & certificate, please contact us at telephone: (86-755) 8307 1443, or email: CN.Doccheck@sgs.com

SGS-CSTC (China) Technical Services (Qingdao) Co., Ltd.

SGS Center, No.143, Zhuzhou Road, Laoshan District, Qingdao, Shandong, China 266101  
中国·山东·青岛市崂山区株洲路143号通标中心 邮编: 266101

t (86-532) 68999888 www.sgs.com  
t (86-532) 68999888 sgs.china@sgs.com

样品照片



**验证方法:**

1. 参考 IEC 62321-2:2021, 拆分申请者提供的成品。
2. 参考 IEC 62321-1:2013, 仅对本报告照片中标识的样品进行了下列测试分析。
  - (1) 参考 IEC 62321-3-1: 2013, 用能量色散型 X 射线荧光分析仪器进行筛选。
  - (2) 湿法化学检测方法: 参考 IEC 62321-4:2013+A1:2017, IEC 62321-5:2013, IEC 62321-7-1:2015, IEC 62321-7-2:2017, IEC 62321-12:2023, IEC 62321-6:2015 和 IEC 62321-8:2017, 采用 ICP-OES, UV-Vis 和 GC- MS 进行分析。



Unless otherwise agreed in writing, this document is issued by the Company subject to its General Conditions of Service printed overleaf, available on request or accessible at <https://www.sgs.com/en/Terms-and-Conditions>. Attention is drawn to the limitation of liability, indemnification and jurisdiction issues defined therein. Any holder of this document is advised that information contained hereon reflects the Company's findings at the time of its intervention only and within the limits of Client's instructions, if any. The Company's sole responsibility is to its Client and this document does not exonerate parties to a transaction from exercising all their rights and obligations under the transaction documents. This document cannot be reproduced except in full, without prior written approval of the Company. Any unauthorized alteration, forgery or falsification of the content or appearance of this document is unlawful and offenders may be prosecuted to the fullest extent of the law.

Attention: To check the authenticity of testing /inspection report & certificate, please contact us at telephone: (86-755) 8307 1443, or email: CN.Doccheck@sgs.com

## 验证报告

编号: TAOEC26003847302

日期: 2026年05月08日

第3页, 共8页

### 验证部件外观描述:

样品序号	样品编号	SGS 样品 ID	样品描述
SN1	A1	TAO26-0038473-0001.C001	银色金属
SN2	A2	TAO26-0038473-0001.C002	银色金属
SN3	A3	TAO26-0038473-0001.C003	银色金属
SN4	A4	TAO26-0038473-0001.C004	黑色塑料
SN5	A5	TAO26-0038473-0001.C005	棕色固体
SN6	A6	TAO26-0038473-0001.C006	银色金属
SN7	A7	TAO26-0038473-0001.C007	铜色漆包线
SN8	A8	TAO26-0038473-0001.C008	银色金属
SN9	A9	TAO26-0038473-0001.C009	银色金属
SN10	A10	TAO26-0038473-0001.C010	银色金属
SN11	A11	TAO26-0038473-0001.C011	铜色金属
SN12	A12	TAO26-0038473-0001.C012	铜色金属
SN13	A13	TAO26-0038473-0001.C013	银色金属



Unless otherwise agreed in writing, this document is issued by the Company subject to its General Conditions of Service printed overleaf, available on request or accessible at <https://www.sgs.com/en/Terms-and-Conditions>. Attention is drawn to the limitation of liability, indemnification and jurisdiction issues defined therein. Any holder of this document is advised that information contained hereon reflects the Company's findings at the time of its intervention only and within the limits of Client's instructions, if any. The Company's sole responsibility is to its Client and this document does not exonerate parties to a transaction from exercising all their rights and obligations under the transaction documents. This document cannot be reproduced except in full, without prior written approval of the Company. Any unauthorized alteration, forgery or falsification of the content or appearance of this document is unlawful and offenders may be prosecuted to the fullest extent of the law.

Attention: To check the authenticity of testing / inspection report & certificate, please contact us at telephone: (86-755) 8307 1443, or email: [CN.Doccheck@sgs.com](mailto:CN.Doccheck@sgs.com)

## 验证报告

编号: TAOEC26003847302

日期: 2026年05月08日

第4页, 共8页

### 验证结果:

(除特别标注, 单位均为: mg/kg)

检测项目	A1	A2	A3	A4	A5	A6	A7	A8
Pb	BL	BL	BL	BL	BL	BL	BL	BL
Hg	BL	BL	BL	BL	BL	BL	BL	BL
Cd	BL	BL	BL	BL	BL	BL	BL	BL
Cr(VI)▼	ND	ND	BL	BL	BL	ND	BL	ND
PBB	---	---	---	BL	BL	---	BL	---
PBDE	---	---	---	BL	BL	---	BL	---
DEHP	---	---	---	BL	BL	---	BL	---
BBP	---	---	---	BL	BL	---	BL	---
DBP	---	---	---	BL	BL	---	BL	---
DIBP	---	---	---	BL	BL	---	BL	---
结论	符合	符合	符合	符合	符合	符合	符合	符合

检测项目	A9	A10	A11	A12	A13
Pb	BL	BL	16293▲	BL	BL
Hg	BL	BL	BL	BL	BL
Cd	BL	BL	BL	BL	BL
Cr(VI)▼	BL	ND	BL	BL	ND
PBB	---	---	---	---	---
PBDE	---	---	---	---	---
DEHP	---	---	---	---	---
BBP	---	---	---	---	---
DBP	---	---	---	---	---
DIBP	---	---	---	---	---
结论	符合	符合	符合	符合	符合



Unless otherwise agreed in writing, this document is issued by the Company subject to its General Conditions of Service printed overleaf, available on request or accessible at <https://www.sgs.com/en/Terms-and-Conditions>. Attention is drawn to the limitation of liability, indemnification and jurisdiction issues defined therein. Any holder of this document is advised that information contained hereon reflects the Company's findings at the time of its intervention only and within the limits of Client's instructions, if any. The Company's sole responsibility is to its Client and this document does not exonerate parties to a transaction from exercising all their rights and obligations under the transaction documents. This document cannot be reproduced except in full, without prior written approval of the Company. Any unauthorized alteration, forgery or falsification of the content or appearance of this document is unlawful and offenders may be prosecuted to the fullest extent of the law.

Attention: To check the authenticity of testing / inspection report & certificate, please contact us at telephone: (86-755) 8307 1443, or email: [CN.Doccheck@sgs.com](mailto:CN.Doccheck@sgs.com)

SGS-CSTC Standards Technical Services (Qingdao) Co., Ltd.

SGS Center, No.143, Zhuzhou Road, Laoshan District, Qingdao, Shandong, China 266101  
中国·山东·青岛市崂山区株洲路143号通标中心 邮编: 266101

t (86-532) 68999888 www.sgs.com.cn  
t (86-532) 68999888 sgs.china@sgs.com

**备注:**

(1) X 射线荧光光谱法(XRF)筛选结果说明:

(a) 下表为 IEC62321-3-1: 2013 附录 A 不同基体材料中以 mg/kg 表示的筛选元素限值:

元素	聚合物	金属	复合材料
Cd	$BL \leq (70-3\sigma) < X < (130+3\sigma) \leq OL$	$BL \leq (70-3\sigma) < X < (130+3\sigma) \leq OL$	$LOD < X < (150+3\sigma) \leq OL$
Pb	$BL \leq (700-3\sigma) < X < (1300+3\sigma) \leq OL$	$BL \leq (700-3\sigma) < X < (1300+3\sigma) \leq OL$	$BL \leq (500-3\sigma) < X < (1500+3\sigma) \leq OL$
Hg	$BL \leq (700-3\sigma) < X < (1300+3\sigma) \leq OL$	$BL \leq (700-3\sigma) < X < (1300+3\sigma) \leq OL$	$BL \leq (500-3\sigma) < X < (1500+3\sigma) \leq OL$
Br	$BL \leq (300-3\sigma) < X$	不适用	$BL \leq (250-3\sigma) < X$
Cr	$BL \leq (700-3\sigma) < X$	$BL \leq (700-3\sigma) < X$	$BL \leq (500-3\sigma) < X$

(b) 现行法规限制的最大允许值是对 PBB/PBDE 和 Cr(VI) 而不是对 Br 和 Cr 的, 而 XRF 测定的是 Br 和 Cr。如果元素 Br 和或 Cr 的定量结果均高于限值(Br 计算基于在常见物质中 PBB/PBDE 的组成的理论计算), 则样品的筛选结果为“不确定”。

(c) EDXRF 的结果用于初步筛选, LOD=检出限, BL=低于限值, OL=超出限值, IN (符号“X”标记的区域)=不确定, 需要进一步研究, 我们建议客户用更精确的化学检测方法测试样品, 如用 ICP-OES 测定 Cd/Pb/Hg; 用 UV-Vis 测定 Cr(VI); 用 GC-MS 测定 PBB/PBDE。

(d) 对于复合材料, EDXRF 筛选测定元素所得数据可能与样品中实际含量不同。

(2) 邻苯二甲酸酯(PHTH)先进行筛分检测以确认样品是否符合限值要求, 符合则以“BL”表示, 若不符合则采用更精确的 GC-MS 化学检测方法测试样品。

检测项目	CAS No.
邻苯二甲酸二(2-乙基己基)酯 (DEHP)	117-81-7
邻苯二甲酸丁苄酯 (BBP)	85-68-7
邻苯二甲酸二丁酯 (DBP)	84-74-2
邻苯二甲酸二异丁酯 (DIBP)	84-69-5

(3) 化学检测方法结果说明:

(a) mg/kg = 0.0001%, MDL=方法检出限, ND =未检出(低于 MDL), --- =不适用。

(b) 化学检测方法的表达单位和方法检出限

检测项目	Pb	Hg	Cd	DEHP	BBP	DBP	DIBP
单位	mg/kg	mg/kg	mg/kg	mg/kg	mg/kg	mg/kg	mg/kg
方法检出限	10	10	10	100	100	100	100

任何一种 PBB 和 PBDE 的方法检出限是 100 mg/kg;

聚合物, 复合材料和皮革样品中 Cr(VI)的方法检出限是 10 mg/kg。

金属样品中 Cr(VI)的方法检出限是 0.10 µg/cm²。

(c) ▼ = 金属样品中

a. 当六价铬的浓度高于 0.13 µg/cm²时, 样品为阳性, 即含有六价铬;

b. 当六价铬的浓度为 ND(低于 0.10 µg/cm²)时, 样品为阴性, 即未检测到六价铬;

c. 当六价铬的浓度介于 0.10 µg/cm²与 0.13 µg/cm²之间时, 无法直接判定是否检测到六价铬, 因不同个体的样品表面差异可能会影响测定结果;

由于未获知样品的存储条件和生产日期, 样品的六价铬检测结果仅能代表检测时样品含六价铬的状态。

(4) RoHS 指令中限制物质及均质材料中最大允许浓度值: Cd: 0.01%, Pb/Hg/Cr(VI)/PBB/PBDE/ DEHP /BBP/DBP/DIBP: 0.1%, 限值引用自 RoHS 指令(EU) 2015/863。

(5) IEC 62321 系列等同于 EN 62321 系列。



Unless otherwise agreed in writing, this document is issued by the Company subject to its General Conditions of Service printed overleaf, available on request or accessible at <https://www.sgs.com/en/Terms-and-Conditions>. Attention is drawn to the limitation of liability, indemnification and jurisdiction issues defined therein. Any holder of this document is advised that information contained herein reflects the Company's findings at the time of its intervention only and within the limits of Client's instructions, if any. The Company's sole responsibility is to its Client and this document does not exonerate parties to a transaction from exercising all their rights and obligations under the transaction documents. This document cannot be reproduced except in full, without prior written approval of the Company. Any unauthorized alteration, forgery or falsification of the content or appearance of this document is unlawful and offenders may be prosecuted to the fullest extent of the law.

Attention: To check the authenticity of testing /inspection report & certificate, please contact us at telephone: (86-755) 8307 1443, or email: CN.Doccheck@sgs.com

SGS-CTS (Shanghai) Technical Services (Qingdao) Co., Ltd.

SGS Center, No.143, Zhuzhou Road, Laoshan District, Qingdao, Shandong, China 266101  
中国·山东·青岛市崂山区株洲路143号通标中心 邮编: 266101

t (86-532) 68999888 www.sgsgroup.com.cn  
t (86-532) 68999888 sgs.china@sgs.com

## 验证报告

编号: TAOEC26003847302

日期: 2026年05月08日

第6页, 共8页

(6)▲根据客户提供的声明, 编号 A11 中的铅(Pb)被欧盟 RoHS 指令 2011/65/EU 豁免, 相应豁免条文(请以英文原文为准) [ANNEX III 6(c)]: 铜合金中的铅含量不得超过 4%。

更多豁免相关信息, 可以从以下链接获取:

<https://rohs.sgsonline.com.cn/PDFLinks/zh-cn/RSTS-TP-037%20RoHS%20Exemption%20%28CN%29.pdf>

除非另有说明, 参照 ILAC-G8:09/2019, 使用简单接受 ( $w=0$ ) 的二元判定规则进行符合性判定。

除非另有说明, 此报告结果仅对检测的样品负责。本报告未经本公司书面许可, 不可部分复制。

检测报告仅用于客户科研、教学、内部质量控制、产品研发等目的, 仅供内部参考。



SGS-CSTC Standards Technical Services (Qingdao) Co., Ltd.

Unless otherwise agreed in writing, this document is issued by the Company subject to its General Conditions of Service printed overleaf, available on request or accessible at <https://www.sgs.com/en/Terms-and-Conditions>. Attention is drawn to the limitation of liability, indemnification and jurisdiction issues defined therein. Any holder of this document is advised that information contained hereon reflects the Company's findings at the time of its intervention only and within the limits of Client's instructions, if any. The Company's sole responsibility is to its Client and this document does not exonerate parties to a transaction from exercising all their rights and obligations under the transaction documents. This document cannot be reproduced except in full, without prior written approval of the Company. Any unauthorized alteration, forgery or falsification of the content or appearance of this document is unlawful and offenders may be prosecuted to the fullest extent of the law.

Attention: To check the authenticity of testing / inspection report & certificate, please contact us at telephone: (86-755) 8307 1443, or email: [CN.Doccheck@sgs.com](mailto:CN.Doccheck@sgs.com)

SGS Center, No.143, Zhuzhou Road, Laoshan District, Qingdao, Shandong, China 266101  
中国·山东·青岛市崂山区株洲路143号通标中心 邮编: 266101

t (86-532) 68999888 www.sgs.com.cn  
t (86-532) 68999888 sgs.china@sgs.com

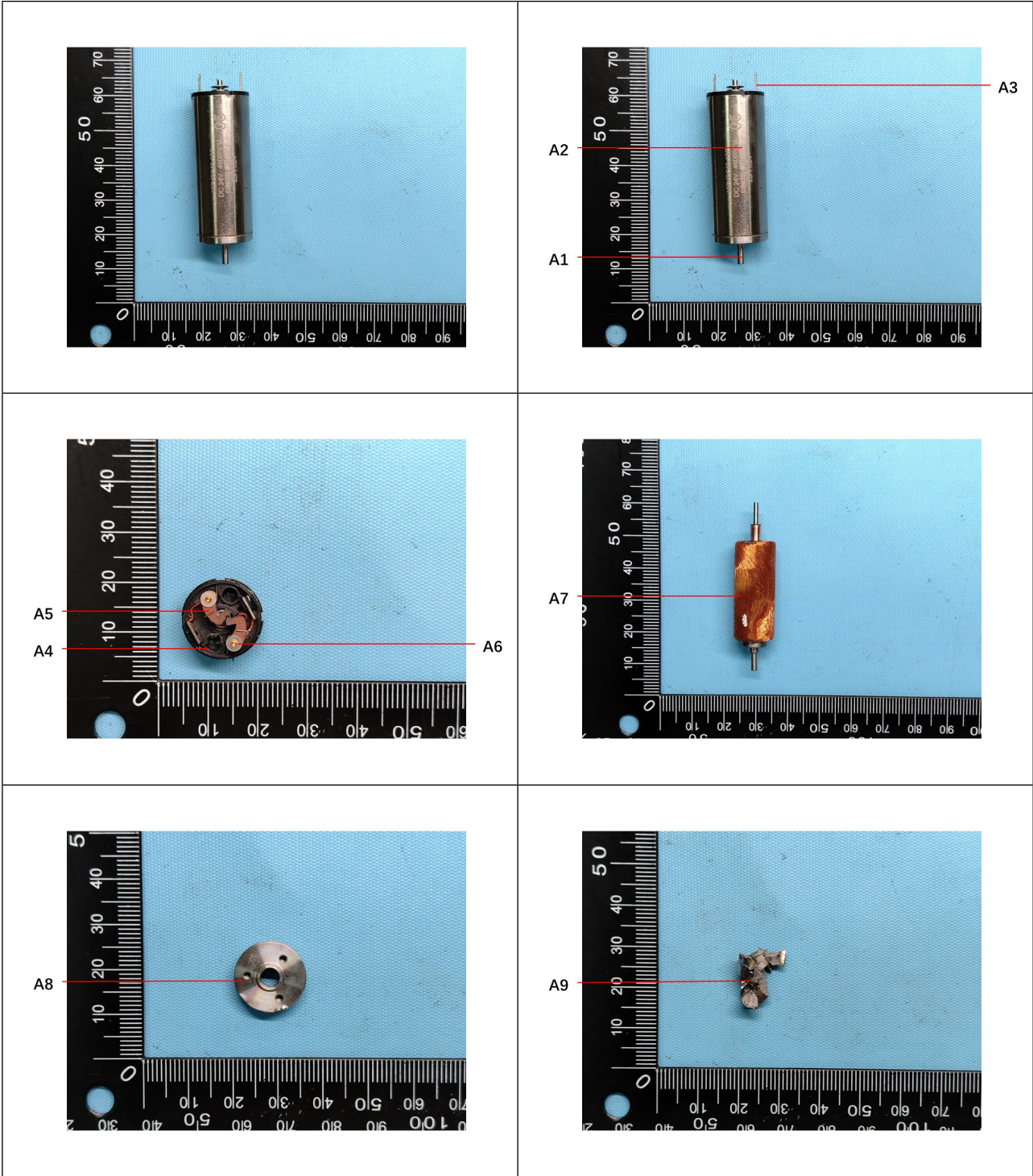
## 验证报告

编号: TAOEC26003847302

日期: 2026年05月08日

第7页, 共8页

样品照片:



Unless otherwise agreed in writing, this document is issued by the Company subject to its General Conditions of Service printed overleaf, available on request or accessible at <https://www.sgs.com/en/Terms-and-Conditions>. Attention is drawn to the limitation of liability, indemnification and jurisdiction issues defined therein. Any holder of this document is advised that information contained hereon reflects the Company's findings at the time of its intervention only and within the limits of Client's instructions, if any. The Company's sole responsibility is to its Client and this document does not exonerate parties to a transaction from exercising all their rights and obligations under the transaction documents. This document cannot be reproduced except in full, without prior written approval of the Company. Any unauthorized alteration, forgery or falsification of the content or appearance of this document is unlawful and offenders may be prosecuted to the fullest extent of the law.

Attention: To check the authenticity of testing / inspection report & certificate, please contact us at telephone: (86-755) 8307 1443, or email: [CN.Doccheck@sgs.com](mailto:CN.Doccheck@sgs.com)

SGS-CSTC (Shanghai) Technical Services (Qingdao) Co., Ltd.

SGS Center, No.143, Zhuzhou Road, Laoshan District, Qingdao, Shandong, China 266101

中国·山东·青岛市崂山区株洲路143号通标中心

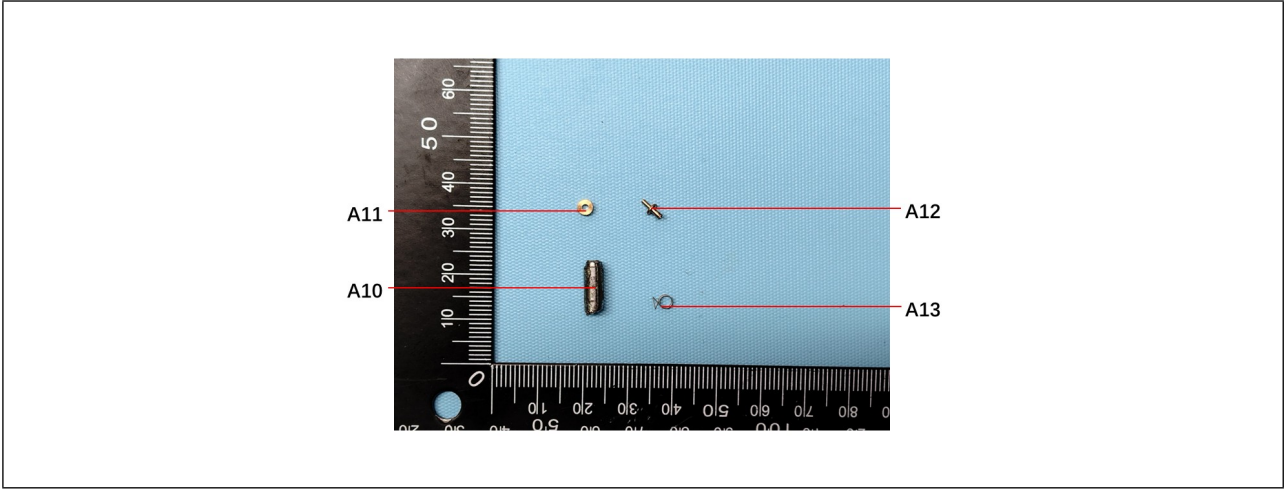
邮编: 266101

t (86-532) 68999888 www.sgs.com.cn

t (86-532) 68999888 sgs.china@sgs.com

Member of the SGS Group (SGS SA)

SGS (Shanghai) Co., Ltd.



此照片仅限于随 SGS 正本报告使用  
\*\*\*报告结束\*\*\*



Unless otherwise agreed in writing, this document is issued by the Company subject to its General Conditions of Service printed overleaf, available on request or accessible at <https://www.sgs.com/en/Terms-and-Conditions>. Attention is drawn to the limitation of liability, indemnification and jurisdiction issues defined therein. Any holder of this document is advised that information contained hereon reflects the Company's findings at the time of its intervention only and within the limits of Client's instructions, if any. The Company's sole responsibility is to its Client and this document does not exonerate parties to a transaction from exercising all their rights and obligations under the transaction documents. This document cannot be reproduced except in full, without prior written approval of the Company. Any unauthorized alteration, forgery or falsification of the content or appearance of this document is unlawful and offenders may be prosecuted to the fullest extent of the law.

Attention: To check the authenticity of testing / inspection report & certificate, please contact us at telephone: (86-755) 8307 1443, or email: [CN.Doccheck@sgs.com](mailto:CN.Doccheck@sgs.com)

SGS-CSTC 山东技术服务(青岛)有限公司

SGS Center, No.143, Zhuzhou Road, Laoshan District, Qingdao, Shandong, China 266101  
中国·山东·青岛市崂山区株洲路143号通标中心 邮编: 266101

t (86-532) 68999888 www.sgsgroup.com.cn  
t (86-532) 68999888 sgs.china@sgs.com