

验证报告

编号: TAOEC25011793702

日期: 2026 年 01 月 05 日

第 1 页, 共 11 页

客户名称: 江苏鼎智智能控制科技股份有限公司
客户地址: 江苏省常州经济开发区潞横路 2850 号

样品名称: 永磁电机线性执行器
测试基本型号: E25PA14B05-40
测试扩展型号: N25PA14B05-87-6, K25PA14B05-13
客户参考信息: E/N/K
以上样品及信息由客户提供。

SGS 工作编号: SHP25-041307
样品接收时间: 2025 年 12 月 08 日
验证周期: 2025 年 12 月 08 日 ~ 2025 年 12 月 11 日
验证要求: 参考欧盟 RoHS 指令 2011/65/EU 的修正指令(EU) 2015/863。
验证方法: 见后续页。
验证程序和结果: 见后续页。

检测结果总结:

检测项目	结论
欧盟 RoHS 指令 2011/65/EU 附录 II 的修正指令(EU) 2015/863-铅、汞、镉、六价铬、多溴联苯 (PBB)、多溴二苯醚 (PBDE)、邻苯二甲酸二(2-乙基己基)酯 (DEHP)、邻苯二甲酸丁苄酯 (BBP)、邻苯二甲酸二丁酯 (DBP)和邻苯二甲酸二异丁酯 (DIBP)	符合

通标标准技术服务(青岛)有限公司
授权签名

孙媛媛

Alice Sun 孙媛媛
批准签署人

Scan to see the report



D5E30F58



Unless otherwise agreed in writing, this document is issued by the Company subject to its General Conditions of Service printed overleaf, available on request or accessible at <https://www.sgs.com/en/Terms-and-Conditions>. Attention is drawn to the limitation of liability, indemnification and jurisdiction issues defined therein. Any holder of this document is advised that information contained hereon reflects the Company's findings at the time of its intervention only and within the limits of Client's instructions, if any. The Company's sole responsibility is to its Client and this document does not exonerate parties to a transaction from exercising all their rights and obligations under the transaction documents. This document cannot be reproduced except in full, without prior written approval of the Company. Any unauthorized alteration, forgery or falsification of the content or appearance of this document is unlawful and offenders may be prosecuted to the fullest extent of the law.
Attention: To check the authenticity of testing / inspection report & certificate, please contact us at telephone: (86-755) 8307 1443, or email: CN.Doccheck@sgs.com

SGS Center, No.143, Zhuzhou Road, Laoshan District, Qingdao, Shandong, China 266101
中国·山东·青岛市崂山区株洲路143号通标中心 邮编: 266101

t (86-532) 68999888 www.sgs.com.cn
t (86-532) 68999888 sgs.china@sgs.com

样品照片



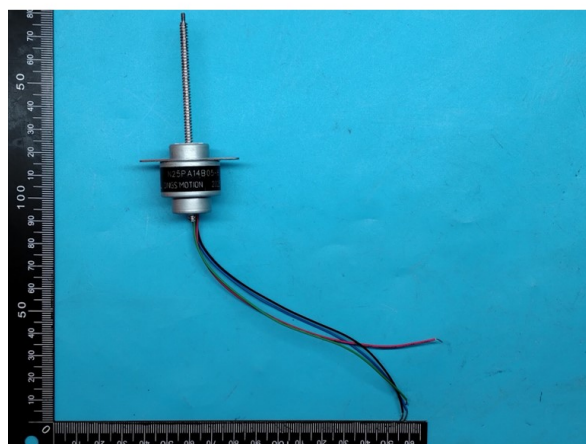
Unless otherwise agreed in writing, this document is issued by the Company subject to its General Conditions of Service printed overleaf, available on request or accessible at <https://www.sgs.com/en/Terms-and-Conditions>. Attention is drawn to the limitation of liability, indemnification and jurisdiction issues defined therein. Any holder of this document is advised that information contained hereon reflects the Company's findings at the time of its intervention only and within the limits of Client's instructions, if any. The Company's sole responsibility is to its Client and this document does not exonerate parties to a transaction from exercising all their rights and obligations under the transaction documents. This document cannot be reproduced except in full, without prior written approval of the Company. Any unauthorized alteration, forgery or falsification of the content or appearance of this document is unlawful and offenders may be prosecuted to the fullest extent of the law.

Attention: To check the authenticity of testing / inspection report & certificate, please contact us at telephone: (86-755) 8307 1443, or email: CN.Doccheck@sgs.com

SGS-CSTC (青岛) 标准技术服务 (青岛) 有限公司

SGS Center, No.143, Zhuzhou Road, Laoshan District, Qingdao, Shandong, China 266101
中国·山东·青岛市崂山区株洲路143号通标中心 邮编: 266101

t (86-532) 68999888 www.sgsgroup.com.cn
t (86-532) 68999888 sgs.china@sgs.com



N25PA14B05-87-6

验证方法:

1. 参考 IEC 62321-2:2021, 拆分申请者提供的成品。
2. 参考 IEC 62321-1:2013, 仅对本报告照片中标识的样品进行了下列测试分析。
 - (1) 参考 IEC 62321-3-1: 2013, 用能量色散型 X 射线荧光分析仪器进行筛选。
 - (2) 湿法化学检测方法: 参考 IEC 62321-4:2013+A1:2017, IEC 62321-5:2013, IEC 62321-7-1:2015, IEC 62321-7-2:2017, IEC 62321-12:2023, IEC 62321-6:2015 和 IEC 62321-8:2017, 采用 ICP-OES, UV-Vis 和 GC- MS 进行分析。



Unless otherwise agreed in writing, this document is issued by the Company subject to its General Conditions of Service printed overleaf, available on request or accessible at <https://www.sgs.com/en/Terms-and-Conditions>. Attention is drawn to the limitation of liability, indemnification and jurisdiction issues defined therein. Any holder of this document is advised that information contained hereon reflects the Company's findings at the time of its intervention only and within the limits of Client's instructions, if any. The Company's sole responsibility is to its Client and this document does not exonerate parties to a transaction from exercising all their rights and obligations under the transaction documents. This document cannot be reproduced except in full, without prior written approval of the Company. Any unauthorized alteration, forgery or falsification of the content or appearance of this document is unlawful and offenders may be prosecuted to the fullest extent of the law.

Attention: To check the authenticity of testing / inspection report & certificate, please contact us at telephone: (86-755) 8307 1443, or email: CN.Doccheck@sgs.com

SGS-CSTC 标准技术服务(青岛)有限公司

SGS Center, No.143, Zhuzhou Road, Laoshan District, Qingdao, Shandong, China 266101
中国·山东·青岛市崂山区株洲路143号通标中心 邮编: 266101

t (86-532) 68999888 www.sgsgroup.com.cn
t (86-532) 68999888 sgs.china@sgs.com

验证报告

编号: TAOEC25011793702

日期: 2026 年 01 月 05 日

第 4 页, 共 11 页

验证部件外观描述:

样品序号	样品编号	SGS 样品 ID	样品描述
SN1	A1	TAO25-0117937-0001.C001	黑色塑料标签
SN2	A2	TAO25-0117937-0001.C002	白色塑料
SN3	A3	TAO25-0117937-0001.C003	银色金属
SN4	A4	TAO25-0117937-0001.C004	银色金属
SN5	A5	TAO25-0117937-0001.C005	银色金属
SN6	A6	TAO25-0117937-0001.C006	铜色金属
SN7	A7	TAO25-0117937-0001.C007	银色金属
SN8	A8	TAO25-0117937-0001.C008	黑色固体
SN9	A9	TAO25-0117937-0001.C009	白色橡胶
SN10	A10	TAO25-0117937-0001.C010	黑色金属
SN11	A11	TAO25-0117937-0001.C011	白色塑料
SN12	A12	TAO25-0117937-0001.C012	黄色塑料胶带
SN13	A13	TAO25-0117937-0001.C013	银色金属
SN14	A14	TAO25-0117937-0001.C014	银色金属
SN15	A15	TAO25-0117937-0001.C015	银色金属
SN16	A16	TAO25-0117937-0001.C016	银色金属
SN17	A17	TAO25-0117937-0001.C017	银色金属
SN18	A18	TAO25-0117937-0001.C018	黄色塑料
SN19	A19	TAO25-0117937-0001.C019	白色塑料
SN20	A20	TAO25-0117937-0001.C020	白色塑料
SN21	A21	TAO25-0117937-0001.C021	白色胶
SN22	A22	TAO25-0117937-0001.C022	白色塑料
SN23	A23	TAO25-0117937-0001.C023	绿色 PCB
SN24	A24	TAO25-0117937-0001.C024	白色塑料
SN25	A25	TAO25-0117937-0001.C025	绿色塑料线皮



Unless otherwise agreed in writing, this document is issued by the Company subject to its General Conditions of Service printed overleaf, available on request or accessible at <https://www.sgs.com/en/Terms-and-Conditions>. Attention is drawn to the limitation of liability, indemnification and jurisdiction issues defined therein. Any holder of this document is advised that information contained hereon reflects the Company's findings at the time of its intervention only and within the limits of Client's instructions, if any. The Company's sole responsibility is to its Client and this document does not exonerate parties to a transaction from exercising all their rights and obligations under the transaction documents. This document cannot be reproduced except in full, without prior written approval of the Company. Any unauthorized alteration, forgery or falsification of the content or appearance of this document is unlawful and offenders may be prosecuted to the fullest extent of the law.

Attention: To check the authenticity of testing / inspection report & certificate, please contact us at telephone: (86-755) 8307 1443, or email: CN.Doccheck@sgs.com

SGS-CSTC (Shanghai) Technical Services Co., Ltd.
SGS-CSTC (Shanghai) Technical Services Co., Ltd.

SGS Center, No.143, Zhuzhou Road, Laoshan District, Qingdao, Shandong, China 266101
中国·山东·青岛市崂山区株洲路143号通标中心 邮编: 266101

t (86-532) 68999888 www.sgsgroup.com.cn
t (86-532) 68999888 sgs.china@sgs.com



验证报告

编号：TAOEC25011793702

日期：2026 年 01 月 05 日

第 5 页，共 11 页

样品序号	样品编号	SGS 样品 ID	样品描述
SN26	A26	TAO25-0117937-0001.C026	蓝色塑料线皮
SN27	A27	TAO25-0117937-0001.C027	黑色塑料线皮
SN28	A28	TAO25-0117937-0001.C028	红色塑料线皮
SN29	B1	TAO25-0117937-0002.C001	银色金属
SN30	B2	TAO25-0117937-0002.C002	银色金属
SN31	B3	TAO25-0117937-0002.C003	银色金属
SN32	B4	TAO25-0117937-0002.C004	白色塑料
SN33	B5	TAO25-0117937-0002.C005	银色金属
SN34	C1	TAO25-0117937-0003.C001	银色金属



Unless otherwise agreed in writing, this document is issued by the Company subject to its General Conditions of Service printed overleaf, available on request or accessible at <https://www.sgs.com/en/Terms-and-Conditions>. Attention is drawn to the limitation of liability, indemnification and jurisdiction issues defined therein. Any holder of this document is advised that information contained hereon reflects the Company's findings at the time of its intervention only and within the limits of Client's instructions, if any. The Company's sole responsibility is to its Client and this document does not exonerate parties to a transaction from exercising all their rights and obligations under the transaction documents. This document cannot be reproduced except in full, without prior written approval of the Company. Any unauthorized alteration, forgery or falsification of the content or appearance of this document is unlawful and offenders may be prosecuted to the fullest extent of the law.

Attention: To check the authenticity of testing / inspection report & certificate, please contact us at telephone: (86-755) 8307 1443, or email: CN.Doccheck@sgs.com

SGS Center, No.143, Zhuzhou Road, Laoshan District, Qingdao, Shandong, China 266101
中国·山东·青岛市崂山区株洲路143号通标中心 邮编: 266101

t (86-532) 68999888 www.sgsgroup.com.cn
t (86-532) 68999888 sgs.china@sgs.com

验证报告

编号: TAOEC25011793702

日期: 2026 年 01 月 05 日

第 6 页, 共 11 页

验证结果:

根据物料风险评估的结果, 验证送测样品中的以下材料。(除特别标注, 单位均为: mg/kg)

检测项目	A1	A2	A3	A4	A5	A6	A7	A8
Pb	BL	BL	BL	BL	BL	BL	BL	BL
Hg	BL	BL	BL	BL	BL	BL	BL	BL
Cd	BL	BL	BL	BL	BL	BL	BL	BL
Cr(VI)▼	BL	BL	ND	BL	BL	BL	BL	ND
PBB	BL	BL	---	---	---	---	---	BL
PBDE	BL	BL	---	---	---	---	---	BL
DEHP	BL	BL	---	---	---	---	---	BL
BBP	BL	BL	---	---	---	---	---	BL
DBP	BL	BL	---	---	---	---	---	BL
DIBP	BL	BL	---	---	---	---	---	BL
结论	符合	符合	符合	符合	符合	符合	符合	符合

检测项目	A9	A10	A11	A12	A13	A14	A15	A16
Pb	BL	BL	BL	BL	BL	BL	BL	BL
Hg	BL	BL	BL	BL	BL	BL	BL	BL
Cd	BL	BL	BL	BL	BL	BL	BL	BL
Cr(VI)▼	BL	ND	BL	BL	BL	ND	ND	BL
PBB	BL	---	ND	BL	---	---	---	---
PBDE	BL	---	ND	BL	---	---	---	---
DEHP	BL	---	ND	BL	---	---	---	---
BBP	BL	---	ND	BL	---	---	---	---
DBP	BL	---	ND	BL	---	---	---	---
DIBP	BL	---	ND	BL	---	---	---	---
结论	符合	符合	符合	符合	符合	符合	符合	符合

检测项目	A17	A18	A19	A20	A21	A22	A23	A24
Pb	BL	BL	BL	BL	BL	BL	BL	BL
Hg	BL	BL	BL	BL	BL	BL	BL	BL
Cd	BL	BL	BL	BL	BL	BL	BL	BL
Cr(VI)▼	ND	BL	BL	BL	BL	BL	BL	BL
PBB	---	BL	ND	BL	BL	BL	ND	BL
PBDE	---	BL	ND	BL	BL	BL	ND	BL
DEHP	---	BL	ND	BL	BL	BL	ND	BL
BBP	---	BL	ND	BL	BL	BL	ND	BL
DBP	---	BL	ND	BL	BL	BL	ND	BL
DIBP	---	BL	ND	BL	BL	BL	ND	BL
结论	符合	符合	符合	符合	符合	符合	符合	符合

检测项目	A25	A26	A27	A28	B1	B2	B3	B4
Pb	BL	BL	BL	BL	BL	BL	BL	BL
Hg	BL	BL	BL	BL	BL	BL	BL	BL
Cd	BL	BL	BL	BL	BL	BL	BL	BL



Unless otherwise agreed in writing, this document is issued by the Company subject to its General Conditions of Service printed overleaf, available on request or accessible at <https://www.sgs.com/en/Terms-and-Conditions>. Attention is drawn to the limitation of liability, indemnification and jurisdiction issues defined therein. Any holder of this document is advised that information contained hereon reflects the Company's findings at the time of its intervention only and within the limits of Client's instructions, if any. The Company's sole responsibility is to its Client and this document does not exonerate parties to a transaction from exercising all their rights and obligations under the transaction documents. This document cannot be reproduced except in full, without prior written approval of the Company. Any unauthorized alteration, forgery or falsification of the content or appearance of this document is unlawful and offenders may be prosecuted to the fullest extent of the law.

Attention: To check the authenticity of testing / inspection report & certificate, please contact us at telephone: (86-755) 8307 1443, or email: CN.Doccheck@sgs.com

SGS Center, No.143, Zhuzhou Road, Laoshan District, Qingdao, Shandong, China 266101
中国·山东·青岛市崂山区株洲路143号通标中心 邮编: 266101

t (86-532) 68999888 www.sgsgroup.com.cn
t (86-532) 68999888 sgs.china@sgs.com

Member of the SGS Group (SGS SA)

验证报告

编号: TAOEC25011793702

日期: 2026 年 01 月 05 日

第 7 页, 共 11 页

检测项目	A25	A26	A27	A28	B1	B2	B3	B4
Cr(VI)▼	BL	BL	BL	BL	ND	ND	BL	BL
PBB	BL	BL	BL	BL	---	---	---	ND
PBDE	BL	BL	BL	BL	---	---	---	ND
DEHP	BL	BL	BL	BL	---	---	---	ND
BBP	BL	BL	BL	BL	---	---	---	ND
DBP	BL	BL	BL	BL	---	---	---	ND
DIBP	BL	BL	BL	BL	---	---	---	ND
结论	符合	符合	符合	符合	符合	符合	符合	符合

检测项目	B5	C1
Pb	BL	BL
Hg	BL	BL
Cd	BL	BL
Cr(VI)▼	ND	ND
PBB	---	---
PBDE	---	---
DEHP	---	---
BBP	---	---
DBP	---	---
DIBP	---	---
结论	符合	符合



Unless otherwise agreed in writing, this document is issued by the Company subject to its General Conditions of Service printed overleaf, available on request or accessible at <https://www.sgs.com/en/Terms-and-Conditions>. Attention is drawn to the limitation of liability, indemnification and jurisdiction issues defined therein. Any holder of this document is advised that information contained hereon reflects the Company's findings at the time of its intervention only and within the limits of Client's instructions, if any. The Company's sole responsibility is to its Client and this document does not exonerate parties to a transaction from exercising all their rights and obligations under the transaction documents. This document cannot be reproduced except in full, without prior written approval of the Company. Any unauthorized alteration, forgery or falsification of the content or appearance of this document is unlawful and offenders may be prosecuted to the fullest extent of the law.

Attention: To check the authenticity of testing / inspection report & certificate, please contact us at telephone: (86-755) 8307 1443, or email: CN.Doccheck@sgs.com

SGS-CSTC Standards Technical Services (Qingdao) Co., Ltd.

SGS Center, No.143, Zhuzhou Road, Laoshan District, Qingdao, Shandong, China 266101
中国·山东·青岛市崂山区株洲路143号通标中心 邮编: 266101

t (86-532) 68999888 www.sgsgroup.com.cn
t (86-532) 68999888 sgs.china@sgs.com

Member of the SGS Group (SGS SA)

备注:

(1) X 射线荧光光谱法(XRF)筛选结果说明:

(a)下表为 IEC62321-3-1: 2013 附录 A 不同基体材料中以 mg/kg 表示的筛选元素限值:

元素	聚合物	金属	复合材料
Cd	$BL \leq (70-3\sigma) < X < (130+3\sigma) \leq OL$	$BL \leq (70-3\sigma) < X < (130+3\sigma) \leq OL$	$LOD < X < (150+3\sigma) \leq OL$
Pb	$BL \leq (700-3\sigma) < X < (1300+3\sigma) \leq OL$	$BL \leq (700-3\sigma) < X < (1300+3\sigma) \leq OL$	$BL \leq (500-3\sigma) < X < (1500+3\sigma) \leq OL$
Hg	$BL \leq (700-3\sigma) < X < (1300+3\sigma) \leq OL$	$BL \leq (700-3\sigma) < X < (1300+3\sigma) \leq OL$	$BL \leq (500-3\sigma) < X < (1500+3\sigma) \leq OL$
Br	$BL \leq (300-3\sigma) < X$	不适用	$BL \leq (250-3\sigma) < X$
Cr	$BL \leq (700-3\sigma) < X$	$BL \leq (700-3\sigma) < X$	$BL \leq (500-3\sigma) < X$

(b) 现行法规限制的最大允许值是对 PBB/PBDE 和 Cr(VI) 而不是对 Br 和 Cr 的, 而 XRF 测定的是 Br 和 Cr。如果元素 Br 和或 Cr 的定量结果均高于限值(Br 计算基于在常见物质中 PBB/PBDE 的组成的理论计算), 则样品的筛选结果为“不确定”。

(c) EDXRF 的结果用于初步筛选, LOD=检出限, BL=低于限值, OL=超出限值, IN (符号“X”标记的区域)=不确定, 需要进一步研究, 我们建议客户用更精确的化学检测方法测试样品, 如用 ICP-OES 测定 Cd/Pb/Hg; 用 UV-Vis 测定 Cr(VI); 用 GC-MS 测定 PBB/PBDE。

(d) 对于复合材料, EDXRF 筛选测定元素所得数据可能与样品中实际含量不同。

(2) 邻苯二甲酸酯(PHTH)先进行筛分检测以确认样品是否符合限值要求, 符合则以“BL”表示, 若不符合则采用更精确的 GC-MS 化学检测方法测试样品。

检测项目	CAS No.
邻苯二甲酸二(2-乙基己基)酯 (DEHP)	117-81-7
邻苯二甲酸丁苄酯 (BBP)	85-68-7
邻苯二甲酸二丁酯 (DBP)	84-74-2
邻苯二甲酸二异丁酯 (DIBP)	84-69-5

(3) 化学检测方法结果说明:

(a) mg/kg = 0.0001%, MDL=方法检出限, ND =未检出(低于 MDL), --- =不适用。

(b) 化学检测方法的表达单位和方法检出限

检测项目	Pb	Hg	Cd	DEHP	BBP	DBP	DIBP
单位	mg/kg	mg/kg	mg/kg	mg/kg	mg/kg	mg/kg	mg/kg
方法检出限	10	10	10	100	100	100	100

任何一种 PBB 和 PBDE 的方法检出限是 100 mg/kg;

聚合物, 复合材料和皮革样品中 Cr(VI)的方法检出限是 10 mg/kg。

金属样品中 Cr(VI)的方法检出限是 0.10 $\mu\text{g}/\text{cm}^2$ 。

(c) ▼ = 金属样品中

a. 当六价铬的浓度高于 0.13 $\mu\text{g}/\text{cm}^2$ 时, 样品为阳性, 即含有六价铬;b. 当六价铬的浓度为 ND(低于 0.10 $\mu\text{g}/\text{cm}^2$)时, 样品为阴性, 即未检测到六价铬;c. 当六价铬的浓度介于 0.10 $\mu\text{g}/\text{cm}^2$ 与 0.13 $\mu\text{g}/\text{cm}^2$ 之间时, 无法直接判定是否检测到六价铬, 因不同个体的样品表面差异可能会影响测定结果;

由于未获知样品的存储条件和生产日期, 样品的六价铬检测结果仅能代表检测时样品含六价铬的状态。

(4) RoHS 指令中限制物质及均质材料中最大允许浓度值: Cd: 0.01%, Pb/Hg/Cr(VI)/PBB/PBDE/ DEHP /BBP/DBP/DIBP: 0.1%, 限值引用自 RoHS 指令(EU) 2015/863。



Unless otherwise agreed in writing, this document is issued by the Company subject to its General Conditions of Service printed overleaf, available on request or accessible at <https://www.sgs.com/en/Terms-and-Conditions>. Attention is drawn to the limitation of liability, indemnification and jurisdiction issues defined therein. Any holder of this document is advised that information contained hereon reflects the Company's findings at the time of its intervention only and within the limits of Client's instructions, if any. The Company's sole responsibility is to its Client and this document does not exonerate parties to a transaction from exercising all their rights and obligations under the transaction documents. This document cannot be reproduced except in full, without prior written approval of the Company. Any unauthorized alteration, forgery or falsification of the content or appearance of this document is unlawful and offenders may be prosecuted to the fullest extent of the law.

Attention: To check the authenticity of testing / inspection report & certificate, please contact us at telephone: (86-755) 8307 1443, or email: CN.Doccheck@sgs.com

SGS-TESTING SERVICES (QINGDAO) CO., LTD.
检验检测专用章
Inspection & Testing Services

SGS Center, No.143, Zhuzhou Road, Laoshan District, Qingdao, Shandong, China 266101
中国·山东·青岛市崂山区株洲路143号通标中心 邮编: 266101

t (86-532) 68999888 www.sgs.com.cn
t (86-532) 68999888 sgs.china@sgs.com

验证报告

编号: TAOEC25011793702

日期: 2026 年 01 月 05 日

第 9 页, 共 11 页

(5) IEC 62321 系列等同于 EN 62321 系列。

除非另有说明, 参照 ILAC-G8:09/2019, 使用简单接受 ($w=0$) 的二元判定规则进行符合性判定。
除非另有说明, 此报告结果仅对检测的样品负责。本报告未经本公司书面许可, 不可部分复制。
检测报告仅用于客户科研、教学、内部质量控制、产品研发等目的, 仅供内部参考。



Unless otherwise agreed in writing, this document is issued by the Company subject to its General Conditions of Service printed overleaf, available on request or accessible at <https://www.sgs.com/en/Terms-and-Conditions>. Attention is drawn to the limitation of liability, indemnification and jurisdiction issues defined therein. Any holder of this document is advised that information contained hereon reflects the Company's findings at the time of its intervention only and within the limits of Client's instructions, if any. The Company's sole responsibility is to its Client and this document does not exonerate parties to a transaction from exercising all their rights and obligations under the transaction documents. This document cannot be reproduced except in full, without prior written approval of the Company. Any unauthorized alteration, forgery or falsification of the content or appearance of this document is unlawful and offenders may be prosecuted to the fullest extent of the law.

Attention: To check the authenticity of testing/inspection report & certificate, please contact us at telephone: (86-755) 8307 1443, or email: CN.Doccheck@sgs.com

SGS CSTC (Shandong) Technical Services Co., Ltd.

SGS Center, No.143, Zhuzhou Road, Laoshan District, Qingdao, Shandong, China 266101
中国·山东·青岛市崂山区株洲路143号通标中心 邮编: 266101

t (86-532) 68999888 www.sgsgroup.com.cn
t (86-532) 68999888 sgs.china@sgs.com

验证报告

编号: TAOEC25011793702

日期: 2026 年 01 月 05 日

第 10 页, 共 11 页

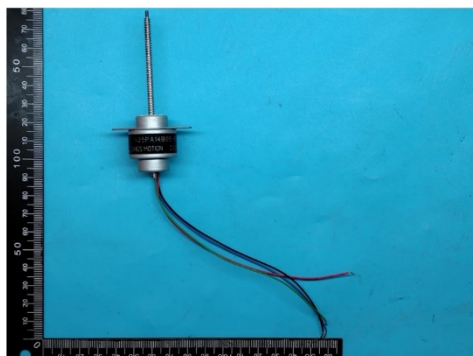
样品照片:



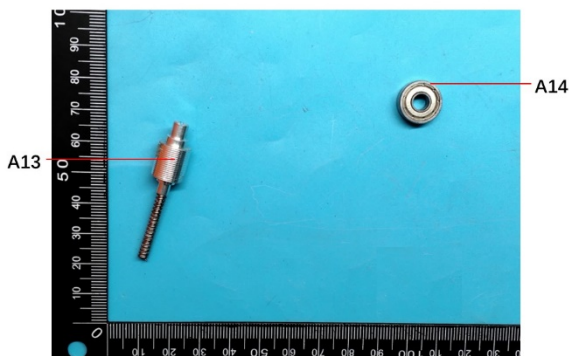
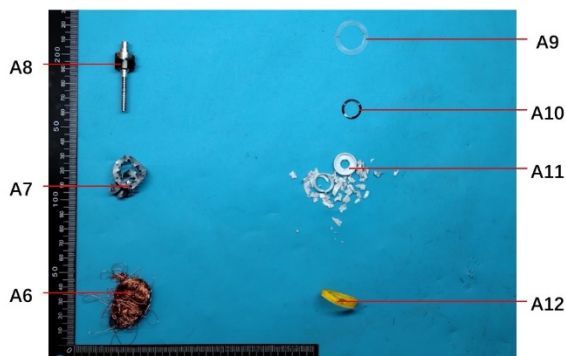
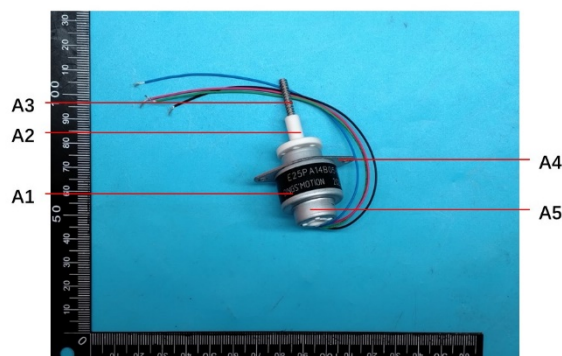
E25PA14B05-40



K25PA14B05-13



N25PA14B05-87-6



Unless otherwise agreed in writing, this document is issued by the Company subject to its General Conditions of Service printed overleaf, available on request or accessible at <https://www.sgs.com/en/Terms-and-Conditions>. Attention is drawn to the limitation of liability, indemnification and jurisdiction issues defined therein. Any holder of this document is advised that information contained hereon reflects the Company's findings at the time of its intervention only and within the limits of Client's instructions, if any. The Company's sole responsibility is to its Client and this document does not exonerate parties to a transaction from exercising all their rights and obligations under the transaction documents. This document cannot be reproduced except in full, without prior written approval of the Company. Any unauthorized alteration, forgery or falsification of the content or appearance of this document is unlawful and offenders may be prosecuted to the fullest extent of the law.

Attention: To check the authenticity of testing / inspection report & certificate, please contact us at telephone: (86-755) 8307 1443, or email: CN.Doccheck@sgs.com

SGS-CSTC (Shanghai) Technical Services (Qingdao) Co., Ltd.

SGS Center, No.143, Zhuzhou Road, Laoshan District, Qingdao, Shandong, China 266101
中国·山东·青岛市崂山区株洲路143号通标中心 邮编: 266101t (86-532) 68999888 www.sgsgroup.com.cn
t (86-532) 68999888 sgs.china@sgs.com

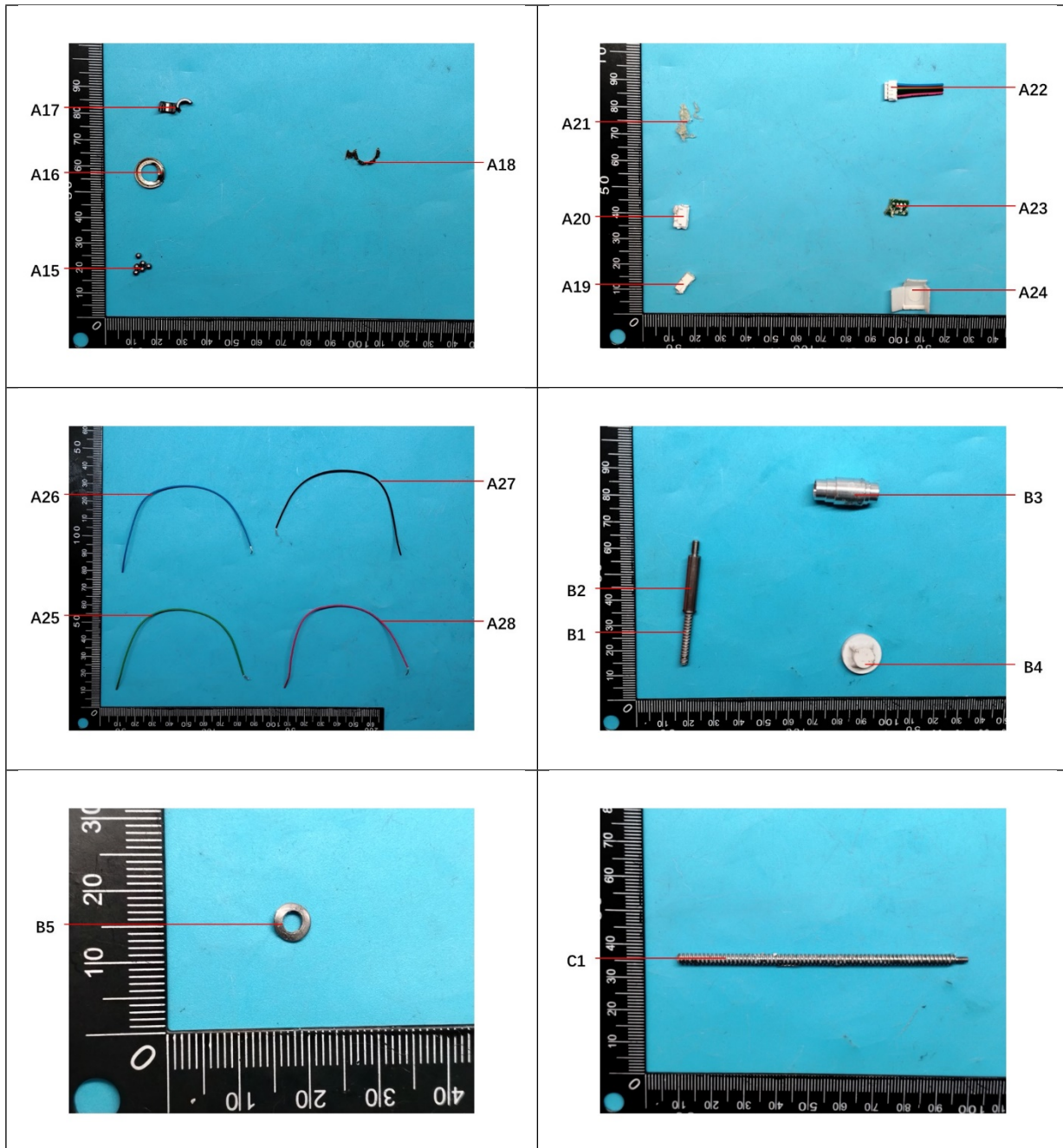
Member of the SGS Group (SGS SA)

验证报告

编号: TAOEC25011793702

日期: 2026 年 01 月 05 日

第 11 页, 共 11 页



此照片仅限于随 SGS 正本报告使用

报告结束



Unless otherwise agreed in writing, this document is issued by the Company subject to its General Conditions of Service printed overleaf, available on request or accessible at <https://www.sgs.com/en/Terms-and-Conditions>. Attention is drawn to the limitation of liability, indemnification and jurisdiction issues defined therein. Any holder of this document is advised that information contained hereon reflects the Company's findings at the time of its intervention only and within the limits of Client's instructions, if any. The Company's sole responsibility is to its Client and this document does not exonerate parties to a transaction from exercising all their rights and obligations under the transaction documents. This document cannot be reproduced except in full, without prior written approval of the Company. Any unauthorized alteration, forgery or falsification of the content or appearance of this document is unlawful and offenders may be prosecuted to the fullest extent of the law.

Attention: To check the authenticity of testing / inspection report & certificate, please contact us at telephone: (86-755) 8307 1443, or email: CN.Doccheck@sgs.com

SGS-CSTC (Shanghai) Technical Services (Qingdao) Co., Ltd.

SGS Center, No.143, Zhuzhou Road, Laoshan District, Qingdao, Shandong, China 266101
中国·山东·青岛市崂山区株洲路143号通标中心 邮编: 266101

t (86-532) 68999888 www.sgsgroup.com.cn
t (86-532) 68999888 sgs.china@sgs.com

Member of the SGS Group (SGS SA)