

验证报告

编号: TAOEC24010274602

日期: 2025 年 01 月 14 日

第 1 页, 共 18 页

客户名称: 江苏鼎智智能控制科技股份有限公司
客户地址: 江苏省常州经济开发区潞城街道潞横路 2850 号

样品名称: 滑动丝杆线性执行器/滚珠丝杆线性执行器/模组/夹爪
测试基本型号: 17E2115Y4-85SNSN-150SZ
测试扩展型号: 17N2115Q4-173SMSN-150SZ/17C2115AA4-100SMSN-150SZ/17K2115K4-100SMSN-150SZ/17E2115BS84-180RNN-030SZ/DLM50-17E2110L4-N-001SZ/DMEG12-17N2115R4-R-101SZ
客户参考信息: E/N/C/K/BS/DLM/DSM/DSLM/DWM/DLG/DMEG
以上样品及信息由客户提供。

SGS 工作编号: SHP24-041710
样品接收时间: 2025 年 01 月 10 日
验证周期: 2025 年 01 月 10 日 ~ 2025 年 01 月 14 日
验证要求: 参考欧盟 RoHS 指令 2011/65/EU 的修正指令(EU) 2015/863。
验证方法: 见后续页。
验证程序和结果: 见后续页。

检测结果总结:

检测项目	结论
欧盟 RoHS 指令 2011/65/EU 附录 II 的修正指令(EU) 2015/863-铅、汞、镉、六价铬、多溴联苯 (PBB)、多溴二苯醚 (PBDE)、邻苯二甲酸二(2-乙基己基)酯 (DEHP)、邻苯二甲酸丁苄酯 (BBP)、邻苯二甲酸二丁酯 (DBP)和邻苯二甲酸二异丁酯 (DIBP)	符合

通标标准技术服务(青岛)有限公司
授权签名

孙媛媛

Alice Sun
批准签署人

scan to see the report



C3DC39D7



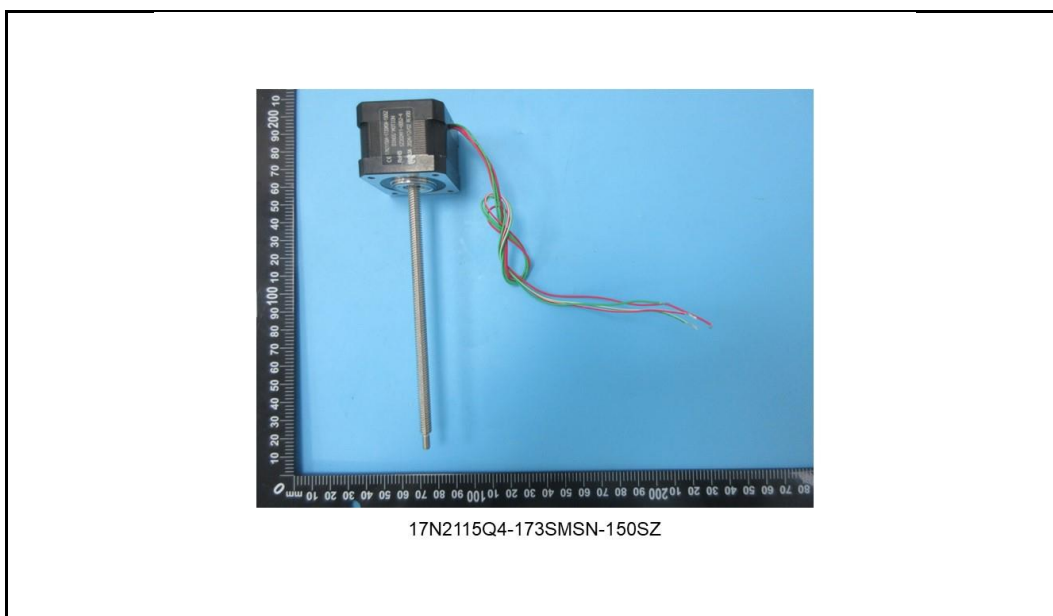
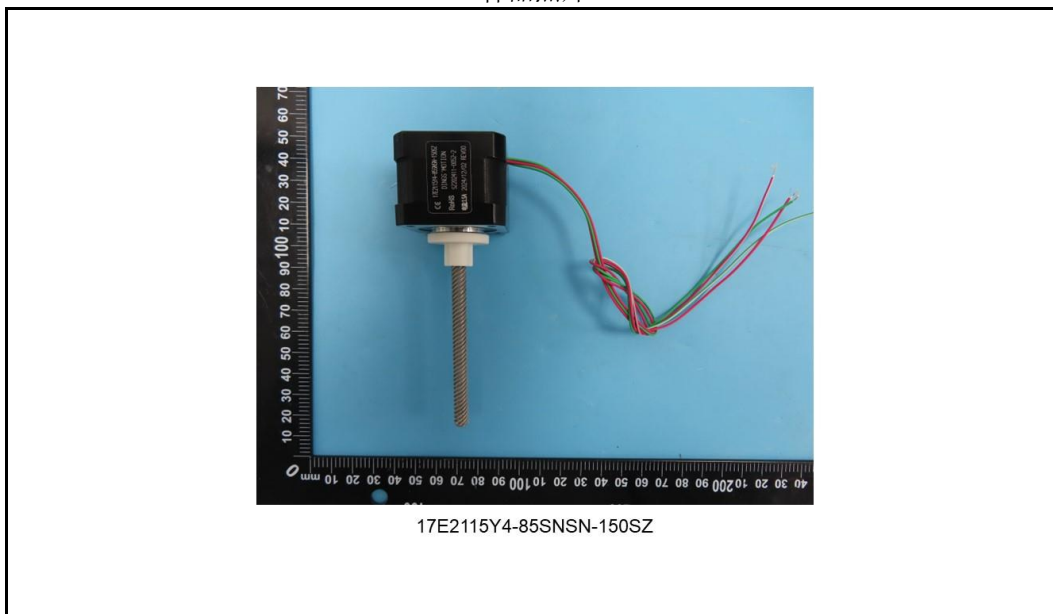
Unless otherwise agreed in writing, this document is issued by the Company subject to its General Conditions of Service printed overleaf, available on request or accessible at <https://www.sgs.com/en/Terms-and-Conditions>. Attention is drawn to the limitation of liability, indemnification and jurisdiction issues defined therein. Any holder of this document is advised that information contained hereon reflects the Company's findings at the time of its intervention only and within the limits of Client's instructions, if any. The Company's sole responsibility is to its Client and this document does not exonerate parties to a transaction from exercising all their rights and obligations under the transaction documents. This document cannot be reproduced except in full, without prior written approval of the Company. Any unauthorized alteration, forgery or falsification of the content or appearance of this document is unlawful and offenders may be prosecuted to the fullest extent of the law.
Attention: To check the authenticity of testing / inspection report & certificate, please contact us at telephone: (86-755) 8307 1443, or email: CN.Doccheck@sgs.com

SGS Center, No.143, Zhuzhou Road, Laoshan District, Qingdao, Shandong, China 266101
中国·山东·青岛市崂山区株洲路143号通标中心 邮编: 266101

t (86-532) 68999888 www.sgs.com.cn
t (86-532) 68999888 sgs.china@sgs.com

Member of the SGS Group (SGS SA)

样品照片



Unless otherwise agreed in writing, this document is issued by the Company subject to its General Conditions of Service printed overleaf, available on request or accessible at <https://www.sgs.com/en/Terms-and-Conditions>. Attention is drawn to the limitation of liability, indemnification and jurisdiction issues defined therein. Any holder of this document is advised that information contained hereon reflects the Company's findings at the time of its intervention only and within the limits of Client's instructions, if any. The Company's sole responsibility is to its Client and this document does not exonerate parties to a transaction from exercising all their rights and obligations under the transaction documents. This document cannot be reproduced except in full, without prior written approval of the Company. Any unauthorized alteration, forgery or falsification of the content or appearance of this document is unlawful and offenders may be prosecuted to the fullest extent of the law.

Attention: To check the authenticity of testing / inspection report & certificate, please contact us at telephone: (86-755) 8307 1443, or email: CN.Doccheck@sgs.com

SGS-CSTC 检验检测专用章
SGS-CSTC (Shanghai) Technical Services (Shanghai) Co., Ltd.

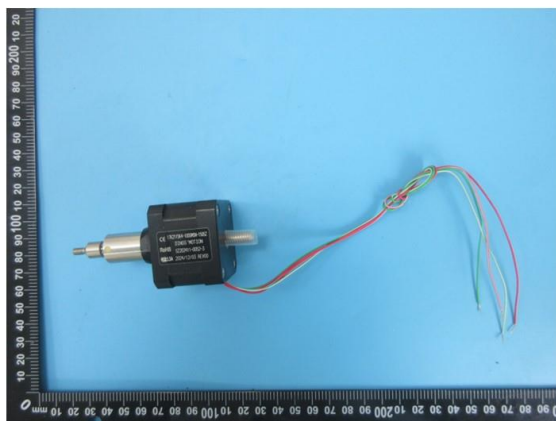
SGS Center, No.143, Zhuzhou Road, Laoshan District, Qingdao, Shandong, China 266101
中国·山东·青岛市崂山区株洲路143号通标中心 邮编: 266101

t (86-532) 68999888 www.sgsgroup.com.cn
t (86-532) 68999888 sgs.china@sgs.com

Member of the SGS Group (SGS SA)



17C2115AA4-100SMN-150SZ



17K2115K4-100SMN-150SZ



SGS-CSTC 青岛技术服务(青岛)有限公司

Unless otherwise agreed in writing, this document is issued by the Company subject to its General Conditions of Service printed overleaf, available on request or accessible at <https://www.sgs.com/en/Terms-and-Conditions>. Attention is drawn to the limitation of liability, indemnification and jurisdiction issues defined therein. Any holder of this document is advised that information contained hereon reflects the Company's findings at the time of its intervention only and within the limits of Client's instructions, if any. The Company's sole responsibility is to its Client and this document does not exonerate parties to a transaction from exercising all their rights and obligations under the transaction documents. This document cannot be reproduced except in full, without prior written approval of the Company. Any unauthorized alteration, forgery or falsification of the content or appearance of this document is unlawful and offenders may be prosecuted to the fullest extent of the law.

Attention: To check the authenticity of testing / inspection report & certificate, please contact us at telephone: (86-755) 8307 1443, or email: CN.Doccheck@sgs.com

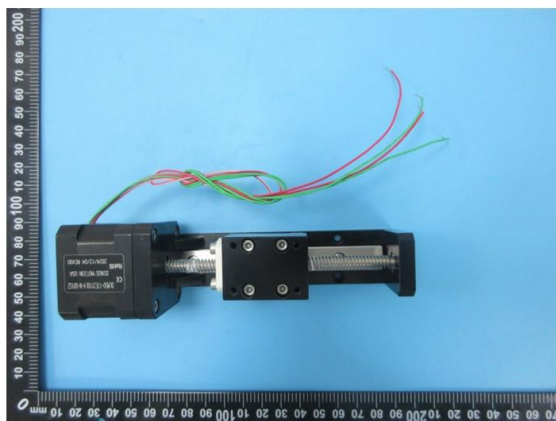
SGS Center, No.143, Zhuzhou Road, Laoshan District, Qingdao, Shandong, China 266101
中国·山东·青岛市崂山区株洲路143号通标中心 邮编: 266101

t (86-532) 68999888 www.sgsgroup.com.cn
t (86-532) 68999888 sgs.china@sgs.com

Member of the SGS Group (SGS SA)



17E2115BS84-180RNN-030SZ



DLM50-17E2110L4-N-001SZ



Unless otherwise agreed in writing, this document is issued by the Company subject to its General Conditions of Service printed overleaf, available on request or accessible at <https://www.sgs.com/en/Terms-and-Conditions>. Attention is drawn to the limitation of liability, indemnification and jurisdiction issues defined therein. Any holder of this document is advised that information contained hereon reflects the Company's findings at the time of its intervention only and within the limits of Client's instructions, if any. The Company's sole responsibility is to its Client and this document does not exonerate parties to a transaction from exercising all their rights and obligations under the transaction documents. This document cannot be reproduced except in full, without prior written approval of the Company. Any unauthorized alteration, forgery or falsification of the content or appearance of this document is unlawful and offenders may be prosecuted to the fullest extent of the law.

Attention: To check the authenticity of testing / inspection report & certificate, please contact us at telephone: (86-755) 8307 1443, or email: CN.Doccheck@sgs.com

SGS-CSTC (Shanghai) Technical Services (Qingdao) Co., Ltd.

SGS Center, No.143, Zhuzhou Road, Laoshan District, Qingdao, Shandong, China 266101
中国·山东·青岛市崂山区株洲路143号通标中心 邮编: 266101

t (86-532) 68999888 www.sgsgroup.com.cn
t (86-532) 68999888 sgs.china@sgs.com

Member of the SGS Group (SGS SA)



DMEG12-17N2115R4-R-101SZ

验证方法:

1. 参考 IEC 62321-2:2021, 拆分申请者提供的成品。
2. 参考 IEC 62321-1:2013, 仅对本报告照片中标识的样品进行了下列测试分析。
 - (1) 参考 IEC 62321-3-1: 2013, 用能量色散型 X 射线荧光分析仪器进行筛选。
 - (2) 湿法化学检测方法: 参考 IEC 62321-4:2013+A1:2017, IEC 62321-5:2013, IEC 62321-7-1:2015, IEC 62321-7-2:2017, IEC 62321-12:2023, IEC 62321-6:2015 和 IEC 62321-8:2017, 采用 ICP-OES, UV-Vis 和 GC- MS 进行分析。



Unless otherwise agreed in writing, this document is issued by the Company subject to its General Conditions of Service printed overleaf, available on request or accessible at <https://www.sgs.com/en/Terms-and-Conditions>. Attention is drawn to the limitation of liability, indemnification and jurisdiction issues defined therein. Any holder of this document is advised that information contained hereon reflects the Company's findings at the time of its intervention only and within the limits of Client's instructions, if any. The Company's sole responsibility is to its Client and this document does not exonerate parties to a transaction from exercising all their rights and obligations under the transaction documents. This document cannot be reproduced except in full, without prior written approval of the Company. Any unauthorized alteration, forgery or falsification of the content or appearance of this document is unlawful and offenders may be prosecuted to the fullest extent of the law.

Attention: To check the authenticity of testing / inspection report & certificate, please contact us at telephone: (86-755) 8307 1443, or email: CN.Doccheck@sgs.com

SGS-CSTC 青岛技术服务有限公司
Inspection & Testing Services
SGS-CSTC Qingdao Technical Services Co., Ltd.

SGS Center, No.143, Zhuzhou Road, Laoshan District, Qingdao, Shandong, China 266101
中国·山东·青岛市崂山区株洲路143号通标中心 邮编: 266101

t (86-532) 68999888 www.sgsgroup.com.cn
t (86-532) 68999888 sgs.china@sgs.com



验证报告

编号: TAOEC24010274602

日期: 2025 年 01 月 14 日

第 6 页, 共 18 页

验证部件外观描述:

样品序号	样品编号	SGS 样品 ID	样品描述
SN1	A1	TAO24-0102746-0001.C001	银色金属
SN2	A2	TAO24-0102746-0001.C002	白色塑料
SN3	A3	TAO24-0102746-0001.C003	黑色塑料标签
SN4	A4	TAO24-0102746-0001.C004	黑色金属
SN5	A5	TAO24-0102746-0001.C005	黑色金属
SN6	A6	TAO24-0102746-0001.C006	银色塑料标签
SN7	A7	TAO24-0102746-0001.C007	白色塑料
SN8	A8	TAO24-0102746-0001.C008	铜色漆包线
SN9	A9	TAO24-0102746-0001.C009	白色塑料
SN10	A10	TAO24-0102746-0001.C010	银色金属
SN11	A11	TAO24-0102746-0001.C011	银色金属螺丝
SN12	A12	TAO24-0102746-0001.C012	银色金属
SN13	A13	TAO24-0102746-0001.C013	银色金属
SN14	A14	TAO24-0102746-0001.C014	铜色金属
SN15	A15	TAO24-0102746-0001.C015	银色金属
SN16	A16	TAO24-0102746-0001.C016	银色金属
SN17	A17	TAO24-0102746-0001.C017	银色金属
SN18	A18	TAO24-0102746-0001.C018	银色金属钢珠
SN19	A19	TAO24-0102746-0001.C019	绿色 PCB
SN20	A20	TAO24-0102746-0001.C020	银色金属焊锡
SN21	A21	TAO24-0102746-0001.C021	米色塑料
SN22	A22	TAO24-0102746-0001.C022	银色金属线芯
SN23	A23	TAO24-0102746-0001.C023	绿色塑料线皮
SN24	A24	TAO24-0102746-0001.C024	绿色/白色塑料
SN25	A25	TAO24-0102746-0001.C025	红色塑料线皮



Unless otherwise agreed in writing, this document is issued by the Company subject to its General Conditions of Service printed overleaf, available on request or accessible at <https://www.sgs.com/en/Terms-and-Conditions>. Attention is drawn to the limitation of liability, indemnification and jurisdiction issues defined therein. Any holder of this document is advised that information contained hereon reflects the Company's findings at the time of its intervention only and within the limits of Client's instructions, if any. The Company's sole responsibility is to its Client and this document does not exonerate parties to a transaction from exercising all their rights and obligations under the transaction documents. This document cannot be reproduced except in full, without prior written approval of the Company. Any unauthorized alteration, forgery or falsification of the content or appearance of this document is unlawful and offenders may be prosecuted to the fullest extent of the law.

Attention: To check the authenticity of testing / inspection report & certificate, please contact us at telephone: (86-755) 8307 1443, or email: CN.Doccheck@sgs.com

SGS-CSTC (Shanghai) Technical Services (Qingdao) Co., Ltd.
SGS-中实(上海)技术服务有限公司(青岛)有限公司

SGS Center, No.143, Zhuzhou Road, Laoshan District, Qingdao, Shandong, China 266101
中国·山东·青岛市崂山区株洲路143号通标中心 邮编: 266101

t (86-532) 68999888 www.sgsgroup.com.cn
t (86-532) 68999888 sgs.china@sgs.com

Member of the SGS Group (SGS SA)

验证报告

编号: TAOEC24010274602

日期: 2025 年 01 月 14 日

第 7 页, 共 18 页

样品序号	样品编号	SGS 样品 ID	样品描述
SN26	A26	TAO24-0102746-0001.C026	红色/白色塑料线皮
SN27	B1	TAO24-0102746-0002.C001	米色塑料
SN28	C1	TAO24-0102746-0003.C001	银色金属
SN29	C2	TAO24-0102746-0003.C002	白色塑料
SN30	C3	TAO24-0102746-0003.C003	黑色塑料
SN31	C4	TAO24-0102746-0003.C004	黑色金属
SN32	C5	TAO24-0102746-0003.C005	银色金属螺丝
SN33	C6	TAO24-0102746-0003.C006	银色金属
SN34	D1	TAO24-0102746-0004.C001	黑色金属
SN35	D2	TAO24-0102746-0004.C002	黄色塑料
SN36	D3	TAO24-0102746-0004.C003	银色金属
SN37	D4	TAO24-0102746-0004.C004	黑色金属
SN38	D5	TAO24-0102746-0004.C005	银色金属
SN39	E1	TAO24-0102746-0005.C001	银色金属
SN40	E2	TAO24-0102746-0005.C002	黑色塑料
SN41	E3	TAO24-0102746-0005.C003	铜色金属线芯
SN42	E4	TAO24-0102746-0005.C004	蓝色塑料线皮
SN43	E5	TAO24-0102746-0005.C005	红色塑料线皮
SN44	E6	TAO24-0102746-0005.C006	黑色塑料线皮
SN45	E7	TAO24-0102746-0005.C007	绿色塑料线皮
SN46	E8	TAO24-0102746-0005.C008	黑色塑料
SN47	E9	TAO24-0102746-0005.C009	银色金属
SN48	E10	TAO24-0102746-0005.C010	白色塑料
SN49	E11	TAO24-0102746-0005.C011	银色金属
SN50	E12	TAO24-0102746-0005.C012	银色金属钢珠



Unless otherwise agreed in writing, this document is issued by the Company subject to its General Conditions of Service printed overleaf, available on request or accessible at <https://www.sgs.com/en/Terms-and-Conditions>. Attention is drawn to the limitation of liability, indemnification and jurisdiction issues defined therein. Any holder of this document is advised that information contained hereon reflects the Company's findings at the time of its intervention only and within the limits of Client's instructions, if any. The Company's sole responsibility is to its Client and this document does not exonerate parties to a transaction from exercising all their rights and obligations under the transaction documents. This document cannot be reproduced except in full, without prior written approval of the Company. Any unauthorized alteration, forgery or falsification of the content or appearance of this document is unlawful and offenders may be prosecuted to the fullest extent of the law.

Attention: To check the authenticity of testing / inspection report & certificate, please contact us at telephone: (86-755) 8307 1443, or email: CN.Doccheck@sgs.com

SGS-CSTC (Shanghai) Technical Services Co., Ltd.

SGS Center, No.143, Zhuzhou Road, Laoshan District, Qingdao, Shandong, China 266101
中国·山东·青岛市崂山区株洲路143号通标中心 邮编: 266101

t (86-532) 68999888 www.sgsgroup.com.cn
t (86-532) 68999888 sgs.china@sgs.com

Member of the SGS Group (SGS SA)



验证报告

编号: TAOEC24010274602

日期: 2025 年 01 月 14 日

第 8 页, 共 18 页

样品序号	样品编号	SGS 样品 ID	样品描述
SN51	E13	TAO24-0102746-0005.C013	黑色橡胶
SN52	F1	TAO24-0102746-0006.C001	黑色金属
SN53	F2	TAO24-0102746-0006.C002	银色金属螺丝
SN54	F3	TAO24-0102746-0006.C003	银色金属
SN55	F4	TAO24-0102746-0006.C004	米色塑料
SN56	F5	TAO24-0102746-0006.C005	银色金属螺丝
SN57	F6	TAO24-0102746-0006.C006	铜色金属
SN58	F7	TAO24-0102746-0006.C007	黑色塑料
SN59	F8	TAO24-0102746-0006.C008	银色金属
SN60	F9	TAO24-0102746-0006.C009	黄色塑料
SN61	F10	TAO24-0102746-0006.C010	银色金属
SN62	F11	TAO24-0102746-0006.C011	银色金属钢珠
SN63	F12	TAO24-0102746-0006.C012	米色塑料
SN64	G1	TAO24-0102746-0007.C001	银色金属螺丝
SN65	G2	TAO24-0102746-0007.C002	银色金属钢珠
SN66	G3	TAO24-0102746-0007.C003	银色金属
SN67	G4	TAO24-0102746-0007.C004	黑色金属
SN68	G5	TAO24-0102746-0007.C005	银色金属
SN69	G6	TAO24-0102746-0007.C006	黑色金属



Unless otherwise agreed in writing, this document is issued by the Company subject to its General Conditions of Service printed overleaf, available on request or accessible at <https://www.sgs.com/en/Terms-and-Conditions>. Attention is drawn to the limitation of liability, indemnification and jurisdiction issues defined therein. Any holder of this document is advised that information contained hereon reflects the Company's findings at the time of its intervention only and within the limits of Client's instructions, if any. The Company's sole responsibility is to its Client and this document does not exonerate parties to a transaction from exercising all their rights and obligations under the transaction documents. This document cannot be reproduced except in full, without prior written approval of the Company. Any unauthorized alteration, forgery or falsification of the content or appearance of this document is unlawful and offenders may be prosecuted to the fullest extent of the law.

Attention: To check the authenticity of testing / inspection report & certificate, please contact us at telephone: (86-755) 8307 1443, or email: CN.Doccheck@sgs.com

SGS Center, No.143, Zhuzhou Road, Laoshan District, Qingdao, Shandong, China 266101
中国·山东·青岛市崂山区株洲路143号通标中心 邮编: 266101

t (86-532) 68999888 www.sgsgroup.com.cn
t (86-532) 68999888 sgs.china@sgs.com

验证报告

编号: TAOEC24010274602

日期: 2025 年 01 月 14 日

第 9 页, 共 18 页

验证结果:

根据物料风险评估的结果, 验证送测样品中的以下材料。(除特别标注, 单位均为: mg/kg)

检测项目	A1	A2	A3	A4	A5	A6	A7	A8
Pb	BL	BL	BL	BL	BL	BL	BL	BL
Hg	BL	BL	BL	BL	BL	BL	BL	BL
Cd	BL	BL	BL	BL	BL	BL	BL	BL
Cr(VI)▼	ND	BL	BL	ND	ND	BL	BL	BL
PBB	---	BL	BL	---	---	BL	BL	BL
PBDE	---	BL	BL	---	---	BL	BL	BL
DEHP	---	BL	BL	---	---	BL	BL	BL
BBP	---	BL	BL	---	---	BL	BL	BL
DBP	---	BL	BL	---	---	BL	BL	BL
DIBP	---	BL	BL	---	---	BL	BL	BL
结论	符合	符合	符合	符合	符合	符合	符合	符合

检测项目	A9	A10	A11	A12	A13	A14	A15	A16
Pb	BL	BL	BL	BL	BL	15906▲	BL	BL
Hg	BL	BL	BL	BL	BL	BL	BL	BL
Cd	BL	BL	BL	BL	BL	BL	BL	BL
Cr(VI)▼	BL	ND	ND	ND	BL	BL	ND	ND
PBB	BL	---	---	---	---	---	---	---
PBDE	BL	---	---	---	---	---	---	---
DEHP	BL	---	---	---	---	---	---	---
BBP	BL	---	---	---	---	---	---	---
DBP	BL	---	---	---	---	---	---	---
DIBP	BL	---	---	---	---	---	---	---
结论	符合	符合	符合	符合	符合	符合	符合	符合

检测项目	A17	A18	A19	A20	A21	A22	A23	A24
Pb	BL	BL	BL	BL	BL	BL	BL	BL
Hg	BL	BL	BL	BL	BL	BL	BL	BL
Cd	BL	BL	BL	BL	BL	BL	BL	BL
Cr(VI)▼	ND	ND	BL	BL	BL	BL	BL	BL
PBB	---	---	ND	---	BL	---	BL	BL
PBDE	---	---	ND	---	BL	---	BL	BL
DEHP	---	---	ND	---	BL	---	BL	BL
BBP	---	---	ND	---	BL	---	BL	BL
DBP	---	---	ND	---	BL	---	BL	BL
DIBP	---	---	ND	---	BL	---	BL	BL
结论	符合	符合	符合	符合	符合	符合	符合	符合

检测项目	A25	A26	B1	C1	C2	C3	C4	C5
Pb	BL	BL	BL	BL	BL	BL	BL	BL
Hg	BL	BL	BL	BL	BL	BL	BL	BL
Cd	BL	BL	BL	BL	BL	BL	BL	BL



Unless otherwise agreed in writing, this document is issued by the Company subject to its General Conditions of Service printed overleaf, available on request or accessible at <https://www.sgs.com/en/Terms-and-Conditions>. Attention is drawn to the limitation of liability, indemnification and jurisdiction issues defined therein. Any holder of this document is advised that information contained hereon reflects the Company's findings at the time of its intervention only and within the limits of Client's instructions, if any. The Company's sole responsibility is to its Client and this document does not exonerate parties to a transaction from exercising all their rights and obligations under the transaction documents. This document cannot be reproduced except in full, without prior written approval of the Company. Any unauthorized alteration, forgery or falsification of the content or appearance of this document is unlawful and offenders may be prosecuted to the fullest extent of the law.

Attention: To check the authenticity of testing / inspection report & certificate, please contact us at telephone: (86-755) 8307 1443, or email: CN.Doccheck@sgs.com

SGS-CSTC (Shanghai) Technical Services (Qingdao) Co., Ltd.

SGS Center, No.143, Zhuzhou Road, Laoshan District, Qingdao, Shandong, China 266101
中国·山东·青岛市崂山区株洲路143号通标中心 邮编: 266101

t (86-532) 68999888 www.sgsgroup.com.cn
t (86-532) 68999888 sgs.china@sgs.com

Member of the SGS Group (SGS SA)

验证报告

编号: TAOEC24010274602

日期: 2025 年 01 月 14 日

第 10 页, 共 18 页

检测项目	A25	A26	B1	C1	C2	C3	C4	C5
Cr(VI)▼	BL	BL	BL	ND	BL	BL	BL	ND
PBB	BL	BL	BL	---	BL	BL	---	---
PBDE	BL	BL	BL	---	BL	BL	---	---
DEHP	BL	BL	BL	---	BL	BL	---	---
BBP	BL	BL	BL	---	BL	BL	---	---
DBP	BL	BL	BL	---	BL	BL	---	---
DIBP	BL	BL	BL	---	BL	BL	---	---
结论	符合	符合	符合	符合	符合	符合	符合	符合

检测项目	C6	D1	D2	D3	D4	D5	E1	E2
Pb	BL	BL	BL	BL	BL	BL	BL	BL
Hg	BL	BL	BL	BL	BL	BL	BL	BL
Cd	BL	BL	BL	BL	BL	BL	BL	BL
Cr(VI)▼	ND	ND	BL	ND	ND	ND	ND	BL
PBB	---	---	BL	---	---	---	---	BL
PBDE	---	---	BL	---	---	---	---	BL
DEHP	---	---	BL	---	---	---	---	BL
BBP	---	---	BL	---	---	---	---	BL
DBP	---	---	BL	---	---	---	---	BL
DIBP	---	---	BL	---	---	---	---	BL
结论	符合	符合	符合	符合	符合	符合	符合	符合

检测项目	E3	E4	E5	E6	E7	E8	E9	E10
Pb	BL	BL	BL	BL	BL	BL	BL	BL
Hg	BL	BL	BL	BL	BL	BL	BL	BL
Cd	BL	BL	BL	BL	BL	BL	BL	BL
Cr(VI)▼	BL	BL	BL	BL	BL	BL	ND	ND
PBB	---	BL	BL	BL	BL	BL	---	BL
PBDE	---	BL	BL	BL	BL	BL	---	BL
DEHP	---	BL	BL	BL	BL	BL	---	BL
BBP	---	BL	BL	BL	BL	BL	---	BL
DBP	---	BL	BL	BL	BL	BL	---	BL
DIBP	---	BL	BL	BL	BL	BL	---	BL
结论	符合	符合	符合	符合	符合	符合	符合	符合

检测项目	E11	E12	E13	F1	F2	F3	F4	F5
Pb	BL	BL	BL	BL	BL	BL	BL	BL
Hg	BL	BL	BL	BL	BL	BL	BL	BL
Cd	BL	BL	BL	BL	BL	BL	BL	BL
Cr(VI)▼	ND	ND	BL	BL	ND	ND	BL	ND
PBB	---	---	BL	---	---	---	BL	---
PBDE	---	---	BL	---	---	---	BL	---
DEHP	---	---	BL	---	---	---	BL	---
BBP	---	---	BL	---	---	---	BL	---
DBP	---	---	BL	---	---	---	BL	---



Unless otherwise agreed in writing, this document is issued by the Company subject to its General Conditions of Service printed overleaf, available on request or accessible at <https://www.sgs.com/en/Terms-and-Conditions>. Attention is drawn to the limitation of liability, indemnification and jurisdiction issues defined therein. Any holder of this document is advised that information contained hereon reflects the Company's findings at the time of its intervention only and within the limits of Client's instructions, if any. The Company's sole responsibility is to its Client and this document does not exonerate parties to a transaction from exercising all their rights and obligations under the transaction documents. This document cannot be reproduced except in full, without prior written approval of the Company. Any unauthorized alteration, forgery or falsification of the content or appearance of this document is unlawful and offenders may be prosecuted to the fullest extent of the law.

Attention: To check the authenticity of testing / inspection report & certificate, please contact us at telephone: (86-755) 8307 1443, or email: CN.Doccheck@sgs.com

SGS-CSTC (Shanghai) Technical Services (Qingdao) Co., Ltd.

SGS Center, No.143, Zhuzhou Road, Laoshan District, Qingdao, Shandong, China 266101
中国·山东·青岛市崂山区株洲路143号通标中心 邮编: 266101

t (86-532) 68999888 www.sgsgroup.com.cn
t (86-532) 68999888 sgs.china@sgs.com

Member of the SGS Group (SGS SA)

验证报告

编号: TAOEC24010274602

日期: 2025 年 01 月 14 日

第 11 页, 共 18 页

检测项目	E11	E12	E13	F1	F2	F3	F4	F5
DIBP	---	---	BL	---	---	---	BL	---
结论	符合	符合	符合	符合	符合	符合	符合	符合

检测项目	F6	F7	F8	F9	F10	F11	F12	G1
Pb	BL	BL	BL	BL	BL	BL	BL	BL
Hg	BL	BL	BL	BL	BL	BL	BL	BL
Cd	BL	BL	BL	BL	BL	BL	BL	BL
Cr(VI)▼	ND	BL	ND	BL	ND	ND	BL	ND
PBB	---	BL	---	BL	---	---	BL	---
PBDE	---	BL	---	BL	---	---	BL	---
DEHP	---	BL	---	BL	---	---	BL	---
BBP	---	BL	---	BL	---	---	BL	---
DBP	---	BL	---	BL	---	---	BL	---
DIBP	---	BL	---	BL	---	---	BL	---
结论	符合	符合	符合	符合	符合	符合	符合	符合

检测项目	G2	G3	G4	G5	G6
Pb	BL	BL	BL	BL	BL
Hg	BL	BL	BL	BL	BL
Cd	BL	BL	BL	BL	BL
Cr(VI)▼	ND	ND	ND	ND	ND
PBB	---	---	---	---	---
PBDE	---	---	---	---	---
DEHP	---	---	---	---	---
BBP	---	---	---	---	---
DBP	---	---	---	---	---
DIBP	---	---	---	---	---
结论	符合	符合	符合	符合	符合



Unless otherwise agreed in writing, this document is issued by the Company subject to its General Conditions of Service printed overleaf, available on request or accessible at <https://www.sgs.com/en/Terms-and-Conditions>. Attention is drawn to the limitation of liability, indemnification and jurisdiction issues defined therein. Any holder of this document is advised that information contained hereon reflects the Company's findings at the time of its intervention only and within the limits of Client's instructions, if any. The Company's sole responsibility is to its Client and this document does not exonerate parties to a transaction from exercising all their rights and obligations under the transaction documents. This document cannot be reproduced except in full, without prior written approval of the Company. Any unauthorized alteration, forgery or falsification of the content or appearance of this document is unlawful and offenders may be prosecuted to the fullest extent of the law.

Attention: To check the authenticity of testing / inspection report & certificate, please contact us at telephone: (86-755) 8307 1443, or email: CN.Doccheck@sgs.com

SGS-CSTC (Shanghai) Technical Services Co., Ltd.

SGS Center, No.143, Zhuzhou Road, Laoshan District, Qingdao, Shandong, China 266101
中国·山东·青岛市崂山区株洲路143号通标中心 邮编: 266101

t (86-532) 68999888 www.sgsgroup.com.cn
t (86-532) 68999888 sgs.china@sgs.com

Member of the SGS Group (SGS SA)

验证报告

编号: TAOEC24010274602

日期: 2025 年 01 月 14 日

第 12 页, 共 18 页

备注:

(1) X 射线荧光光谱法(XRF)筛选结果说明:

(a)下表为 IEC62321-3-1: 2013 附录 A 不同基体材料中以 mg/kg 表示的筛选元素限值:

元素	聚合物	金属	复合材料
Cd	$BL \leq (70-3\sigma) < X < (130+3\sigma) \leq OL$	$BL \leq (70-3\sigma) < X < (130+3\sigma) \leq OL$	$LOD < X < (150+3\sigma) \leq OL$
Pb	$BL \leq (700-3\sigma) < X < (1300+3\sigma) \leq OL$	$BL \leq (700-3\sigma) < X < (1300+3\sigma) \leq OL$	$BL \leq (500-3\sigma) < X < (1500+3\sigma) \leq OL$
Hg	$BL \leq (700-3\sigma) < X < (1300+3\sigma) \leq OL$	$BL \leq (700-3\sigma) < X < (1300+3\sigma) \leq OL$	$BL \leq (500-3\sigma) < X < (1500+3\sigma) \leq OL$
Br	$BL \leq (300-3\sigma) < X$	不适用	$BL \leq (250-3\sigma) < X$
Cr	$BL \leq (700-3\sigma) < X$	$BL \leq (700-3\sigma) < X$	$BL \leq (500-3\sigma) < X$

(b) 现行法规限制的最大允许值是对 PBB/PBDE 和 Cr(VI) 而不是对 Br 和 Cr 的, 而 XRF 测定的是 Br 和 Cr。如果元素 Br 和或 Cr 的定量结果均高于限值(Br 计算基于在常见物质中 PBB/PBDE 的组成的理论计算), 则样品的筛选结果为“不确定”。

(c) EDXRF 的结果用于初步筛选, LOD=检出限, BL=低于限值, OL=超出限值, IN (符号“X”标记的区域)=不确定, 需要进一步研究, 我们建议客户用更精确的化学检测方法测试样品, 如用 ICP-OES 测定 Cd/Pb/Hg; 用 UV-Vis 测定 Cr(VI); 用 GC-MS 测定 PBB/PBDE。

(d) 对于复合材料, EDXRF 筛选测定元素所得数据可能与样品中实际含量不同。

(2) 邻苯二甲酸酯(PHTH)先进行筛分检测以确认样品是否符合限值要求, 符合则以“BL”表示, 若不符合则采用更精确的 GC-MS 化学检测方法测试样品。

检测项目	CAS No.
邻苯二甲酸二(2-乙基己基)酯 (DEHP)	117-81-7
邻苯二甲酸丁苄酯 (BBP)	85-68-7
邻苯二甲酸二丁酯 (DBP)	84-74-2
邻苯二甲酸二异丁酯 (DIBP)	84-69-5

(3) 化学检测方法结果说明:

(a) mg/kg = 0.0001%, MDL=方法检出限, ND =未检出(低于 MDL), --- =不适用。

(b) 化学检测方法的表达单位和方法检出限

检测项目	Pb	Hg	Cd	DEHP	BBP	DBP	DIBP
单位	mg/kg	mg/kg	mg/kg	mg/kg	mg/kg	mg/kg	mg/kg
方法检出限	10	10	10	100	100	100	100

任何一种 PBB 和 PBDE 的方法检出限是 100 mg/kg;

聚合物, 复合材料和皮革样品中 Cr(VI)的方法检出限是 10 mg/kg。

金属样品中 Cr(VI)的方法检出限是 0.10 $\mu\text{g}/\text{cm}^2$ 。

(c) ▼ = 金属样品中

a. 当六价格的浓度高于 0.13 $\mu\text{g}/\text{cm}^2$ 时, 样品为阳性, 即含有六价格;b. 当六价格的浓度为 ND(低于 0.10 $\mu\text{g}/\text{cm}^2$)时, 样品为阴性, 即未检测到六价格;c. 当六价格的浓度介于 0.10 $\mu\text{g}/\text{cm}^2$ 与 0.13 $\mu\text{g}/\text{cm}^2$ 之间时, 无法直接判定是否检测到六价格, 因不同个体的样品表面差异可能会影响测定结果;

由于未获知样品的存储条件和生产日期, 样品的六价格检测结果仅能代表检测时样品含六价格的状态。

(4) RoHS 指令中限制物质及均质材料中最大允许浓度值: Cd: 0.01%, Pb/Hg/Cr(VI)/PBB/PBDE/ DEHP



Unless otherwise agreed in writing, this document is issued by the Company subject to its General Conditions of Service printed overleaf, available on request or accessible at <https://www.sgs.com/en/Terms-and-Conditions>. Attention is drawn to the limitation of liability, indemnification and jurisdiction issues defined therein. Any holder of this document is advised that information contained hereon reflects the Company's findings at the time of its intervention only and within the limits of Client's instructions, if any. The Company's sole responsibility is to its Client and this document does not exonerate parties to a transaction from exercising all their rights and obligations under the transaction documents. This document cannot be reproduced except in full, without prior written approval of the Company. Any unauthorized alteration, forgery or falsification of the content or appearance of this document is unlawful and offenders may be prosecuted to the fullest extent of the law.

Attention: To check the authenticity of testing / inspection report & certificate, please contact us at telephone: (86-755) 8307 1443, or email: CN.Doccheck@sgs.com

SGS CSTC (Shanghai) Technical Services (Qingdao) Co., Ltd.
中国·山东·青岛市崂山区株洲路143号通标中心

SGS Center, No.143, Zhuzhou Road, Laoshan District, Qingdao, Shandong, China 266101
邮编: 266101

t (86-532) 68999888 www.sgsgroup.com.cn
t (86-532) 68999888 sgs.china@sgs.com

验证报告

编号: TAOEC24010274602

日期: 2025 年 01 月 14 日

第 13 页, 共 18 页

/BBP/DBP/DIBP: 0.1%, 限值引用自 RoHS 指令(EU) 2015/863。

(5) IEC 62321 系列等同于 EN 62321 系列。

(6)▲ 根据客户提供的声明, 编号 A14 中的铅(Pb)被欧盟 RoHS 指令 2011/65/EU 豁免, 相应豁免条文(请以英文原文为准) [ANNEX III 6(c)]: 铜合金中的铅含量不得超过 4%。

更多豁免相关信息, 可以从以下链接获取:

[https://rohs.sgsonline.com.cn/PDFLinks/zh-cn/RSTS-TP-037%20RoHS%20Exemption%20\(CN\).pdf](https://rohs.sgsonline.com.cn/PDFLinks/zh-cn/RSTS-TP-037%20RoHS%20Exemption%20(CN).pdf)

除非另有说明, 参照 ILAC-G8:09/2019, 使用简单接受 ($w=0$) 的二元判定规则进行符合性判定。

除非另有说明, 此报告结果仅对检测的样品负责。本报告未经本公司书面许可, 不可部分复制。

检测报告仅用于客户科研、教学、内部质量控制、产品研发等目的, 仅供内部参考。



Unless otherwise agreed in writing, this document is issued by the Company subject to its General Conditions of Service printed overleaf, available on request or accessible at <https://www.sgs.com/en/Terms-and-Conditions>. Attention is drawn to the limitation of liability, indemnification and jurisdiction issues defined therein. Any holder of this document is advised that information contained hereon reflects the Company's findings at the time of its intervention only and within the limits of Client's instructions, if any. The Company's sole responsibility is to its Client and this document does not exonerate parties to a transaction from exercising all their rights and obligations under the transaction documents. This document cannot be reproduced except in full, without prior written approval of the Company. Any unauthorized alteration, forgery or falsification of the content or appearance of this document is unlawful and offenders may be prosecuted to the fullest extent of the law.

Attention: To check the authenticity of testing / inspection report & certificate, please contact us at telephone: (86-755) 8307 1443, or email: CN.Doccheck@sgs.com

SGS-CSTC Shandong Technical Services Co., Ltd.

SGS Center, No.143, Zhuzhou Road, Laoshan District, Qingdao, Shandong, China 266101
中国·山东·青岛市崂山区株洲路143号通标中心 邮编: 266101

t (86-532) 68999888 www.sgsgroup.com.cn
t (86-532) 68999888 sgs.china@sgs.com

验证报告

编号: TAOEC24010274602

日期: 2025 年 01 月 14 日

第 14 页, 共 18 页

样品照片:



17E2115Y4-85SNSN-150SZ



17N2115Q4-173SMSN-150SZ



17C2115AA4-100SMSN-150SZ



17K2115K4-100SMSN-150SZ



17E2115BS84-180RNN-030SZ



DLM50-17E2110L4-N-001SZ



Unless otherwise agreed in writing, this document is issued by the Company subject to its General Conditions of Service printed overleaf, available on request or accessible at <https://www.sgs.com/en/Terms-and-Conditions>. Attention is drawn to the limitation of liability, indemnification and jurisdiction issues defined therein. Any holder of this document is advised that information contained hereon reflects the Company's findings at the time of its intervention only and within the limits of Client's instructions, if any. The Company's sole responsibility is to its Client and this document does not exonerate parties to a transaction from exercising all their rights and obligations under the transaction documents. This document cannot be reproduced except in full, without prior written approval of the Company. Any unauthorized alteration, forgery or falsification of the content or appearance of this document is unlawful and offenders may be prosecuted to the fullest extent of the law.

Attention: To check the authenticity of testing / inspection report & certificate, please contact us at telephone: (86-755) 8307 1443, or email: CN.Doccheck@sgs.com

SGS-CSTC (Shanghai) Technical Services (Qingdao) Co., Ltd.
SGS-CSTC (Shanghai) Technical Services (Qingdao) Co., Ltd.

SGS Center, No.143, Zhuzhou Road, Laoshan District, Qingdao, Shandong, China 266101
中国·山东·青岛市崂山区株洲路143号通标中心 邮编: 266101

t (86-532) 68999888 www.sgsgroup.com.cn
t (86-532) 68999888 sgs.china@sgs.com

Member of the SGS Group (SGS SA)

验证报告

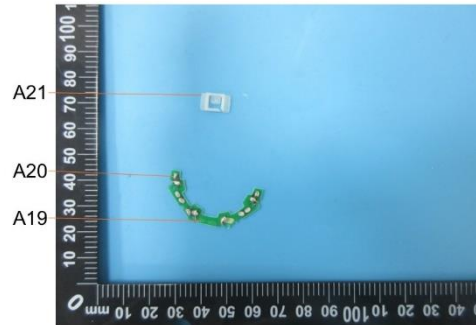
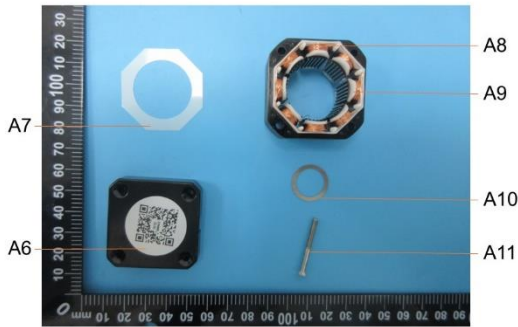
编号: TAOEC24010274602

日期: 2025 年 01 月 14 日

第 15 页, 共 18 页



DMEG12-17N2115R4-R-101SZ



SGS-CSTC (Shanghai) Technical Services (Qingdao) Co., Ltd.

Unless otherwise agreed in writing, this document is issued by the Company subject to its General Conditions of Service printed overleaf, available on request or accessible at <https://www.sgs.com/en/Terms-and-Conditions>. Attention is drawn to the limitation of liability, indemnification and jurisdiction issues defined therein. Any holder of this document is advised that information contained herein reflects the Company's findings at the time of its intervention only and within the limits of Client's instructions, if any. The Company's sole responsibility is to its Client and this document does not exonerate parties to a transaction from exercising all their rights and obligations under the transaction documents. This document cannot be reproduced except in full, without prior written approval of the Company. Any unauthorized alteration, forgery or falsification of the content or appearance of this document is unlawful and offenders may be prosecuted to the fullest extent of the law.

Attention: To check the authenticity of testing / inspection report & certificate, please contact us at telephone: (86-755) 8307 1443, or email: CN.Doccheck@sgs.com

SGS Center, No.143, Zhuzhou Road, Laoshan District, Qingdao, Shandong, China 266101

中国·山东·青岛市崂山区株洲路143号通标中心 邮编: 266101

t (86-532) 68999888 www.sgsgroup.com.cn

t (86-532) 68999888 sgs.china@sgs.com

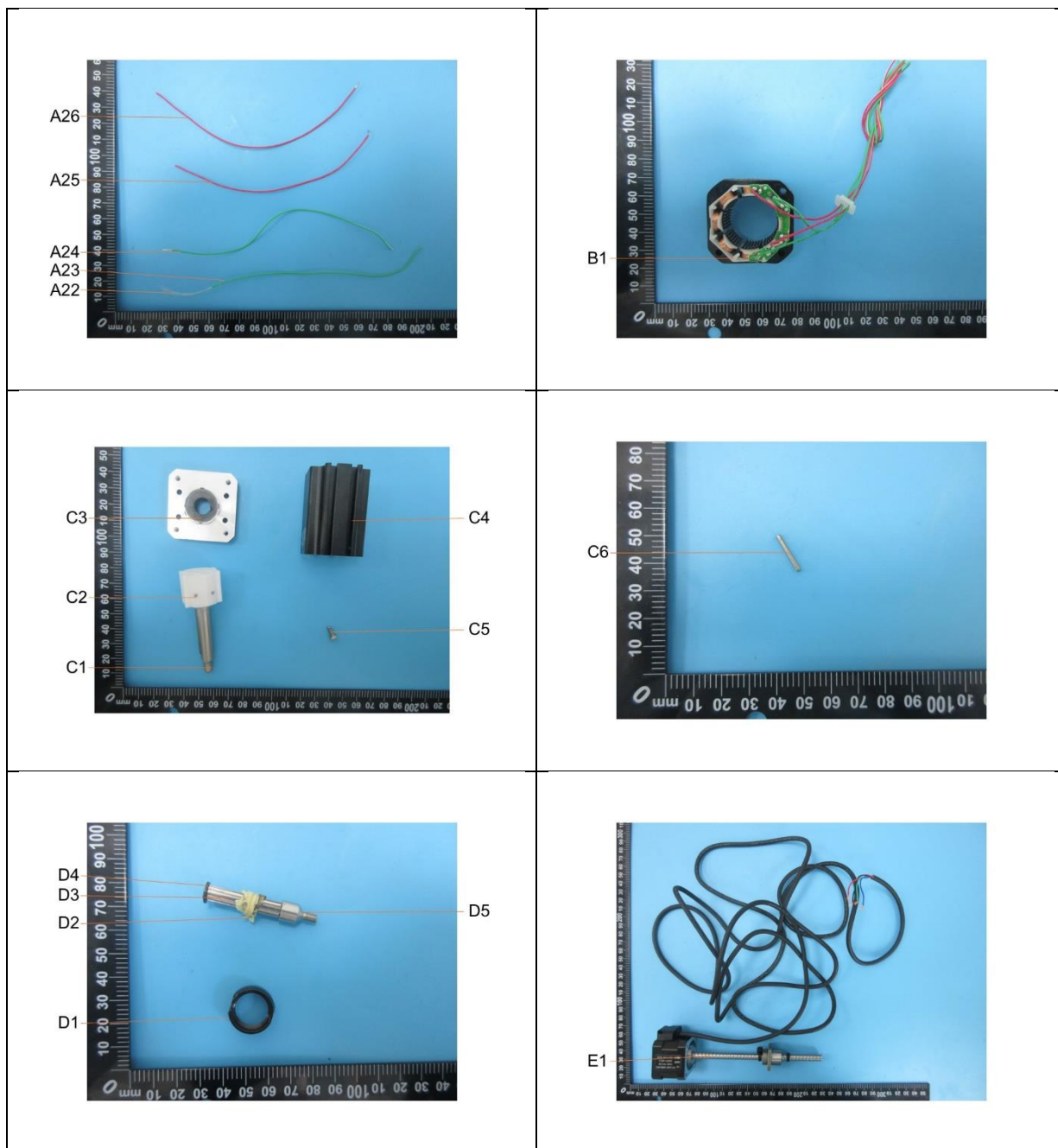
Member of the SGS Group (SGS SA)

验证报告

编号: TAOEC24010274602

日期: 2025 年 01 月 14 日

第 16 页, 共 18 页



Unless otherwise agreed in writing, this document is issued by the Company subject to its General Conditions of Service printed overleaf, available on request or accessible at <https://www.sgs.com/en/Terms-and-Conditions>. Attention is drawn to the limitation of liability, indemnification and jurisdiction issues defined therein. Any holder of this document is advised that information contained hereon reflects the Company's findings at the time of its intervention only and within the limits of Client's instructions, if any. The Company's sole responsibility is to its Client and this document does not exonerate parties to a transaction from exercising all their rights and obligations under the transaction documents. This document cannot be reproduced except in full, without prior written approval of the Company. Any unauthorized alteration, forgery or falsification of the content or appearance of this document is unlawful and offenders may be prosecuted to the fullest extent of the law.

Attention: To check the authenticity of testing / inspection report & certificate, please contact us at telephone: (86-755) 8307 1443, or email: CN.Doccheck@sgs.com

SGS-CSTC (Shanghai) Technical Services (Qingdao) Co., Ltd.

SGS Center, No.143, Zhuzhou Road, Laoshan District, Qingdao, Shandong, China 266101
中国·山东·青岛市崂山区株洲路143号通标中心 邮编: 266101

t (86-532) 68999888 www.sgsgroup.com.cn
t (86-532) 68999888 sgs.china@sgs.com

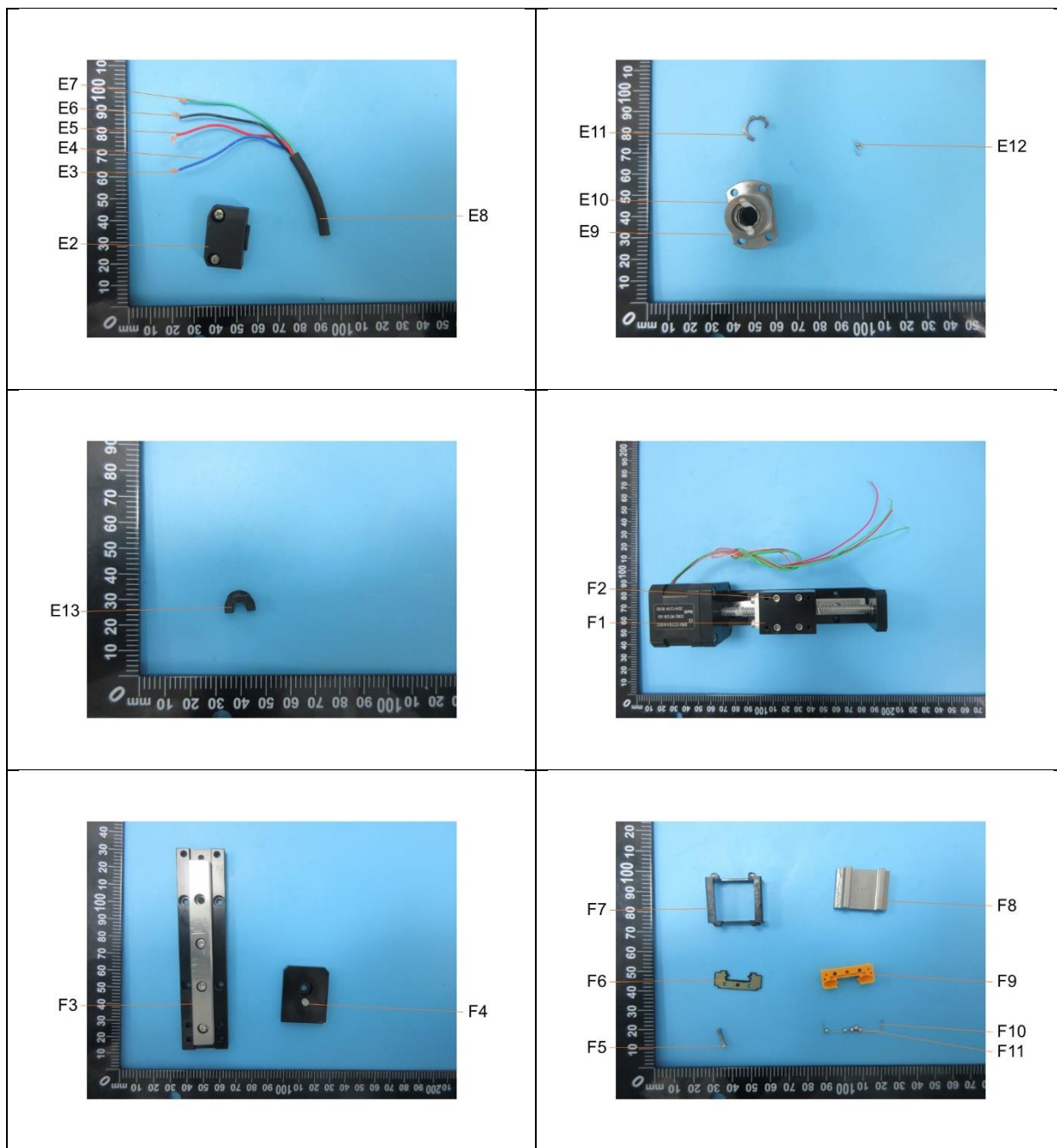
Member of the SGS Group (SGS SA)

验证报告

编号: TAOEC24010274602

日期: 2025 年 01 月 14 日

第 17 页, 共 18 页



Unless otherwise agreed in writing, this document is issued by the Company subject to its General Conditions of Service printed overleaf, available on request or accessible at <https://www.sgs.com/en/Terms-and-Conditions>. Attention is drawn to the limitation of liability, indemnification and jurisdiction issues defined therein. Any holder of this document is advised that information contained hereon reflects the Company's findings at the time of its intervention only and within the limits of Client's instructions, if any. The Company's sole responsibility is to its Client and this document does not exonerate parties to a transaction from exercising all their rights and obligations under the transaction documents. This document cannot be reproduced except in full, without prior written approval of the Company. Any unauthorized alteration, forgery or falsification of the content or appearance of this document is unlawful and offenders may be prosecuted to the fullest extent of the law.

Attention: To check the authenticity of testing / inspection report & certificate, please contact us at telephone: (86-755) 8307 1443, or email: CN.Doccheck@sgs.com

SGS-CSTC (Shanghai) Technical Services (Qingdao) Co., Ltd.

SGS Center, No.143, Zhuzhou Road, Laoshan District, Qingdao, Shandong, China 266101
中国·山东·青岛市崂山区株洲路143号通标中心 邮编: 266101

t (86-532) 68999888 www.sgsgroup.com.cn
t (86-532) 68999888 sgs.china@sgs.com

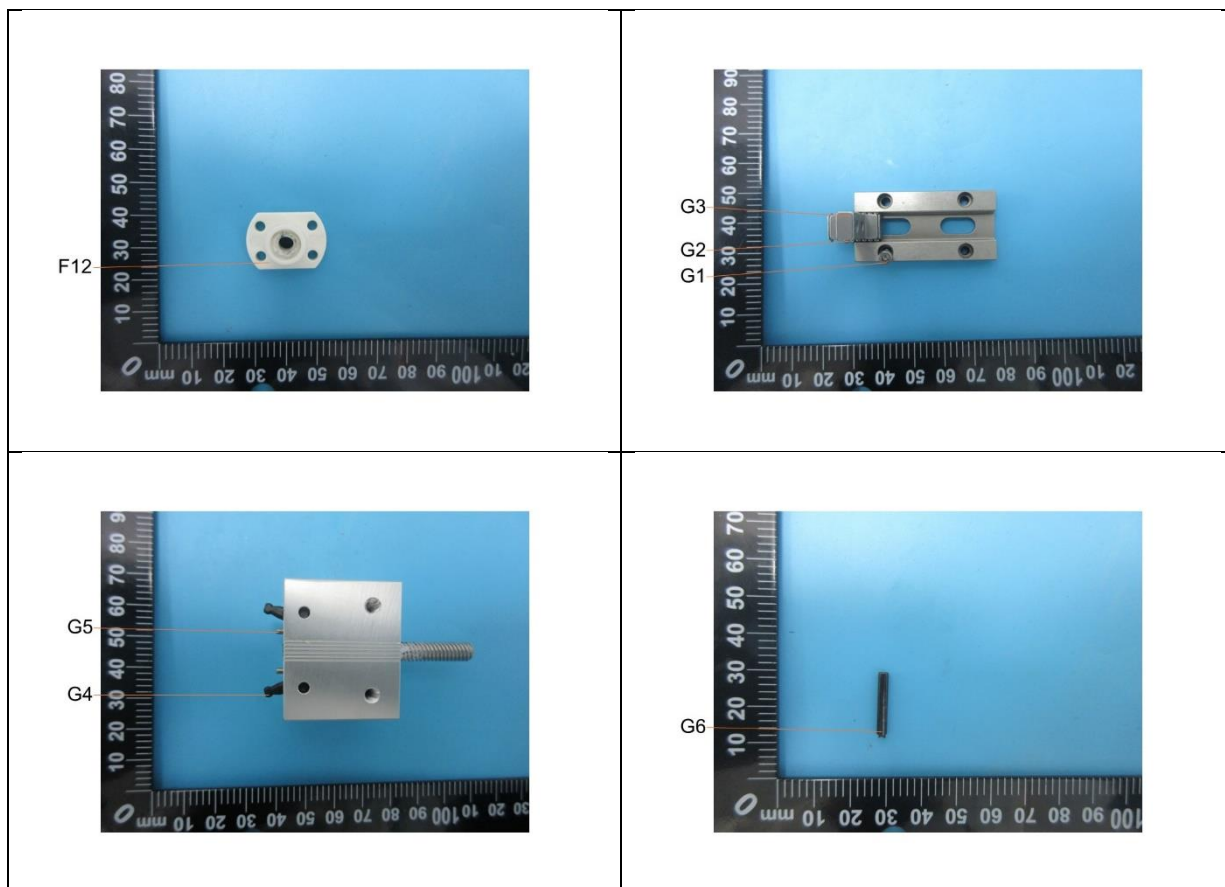
Member of the SGS Group (SGS SA)

验证报告

编号: TAOEC24010274602

日期: 2025 年 01 月 14 日

第 18 页, 共 18 页



此照片仅限于随 SGS 正本报告使用

报告结束



Unless otherwise agreed in writing, this document is issued by the Company subject to its General Conditions of Service printed overleaf, available on request or accessible at <https://www.sgs.com/en/Terms-and-Conditions>. Attention is drawn to the limitation of liability, indemnification and jurisdiction issues defined therein. Any holder of this document is advised that information contained hereon reflects the Company's findings at the time of its intervention only and within the limits of Client's instructions, if any. The Company's sole responsibility is to its Client and this document does not exonerate parties to a transaction from exercising all their rights and obligations under the transaction documents. This document cannot be reproduced except in full, without prior written approval of the Company. Any unauthorized alteration, forgery or falsification of the content or appearance of this document is unlawful and offenders may be prosecuted to the fullest extent of the law.

Attention: To check the authenticity of testing / inspection report & certificate, please contact us at telephone: (86-755) 8307 1443, or email: CN.Doccheck@sgs.com

SGS-CSTC (Shanghai) Technical Services (Qingdao) Co., Ltd.

SGS Center, No.143, Zhuzhou Road, Laoshan District, Qingdao, Shandong, China 266101
中国·山东·青岛市崂山区株洲路143号通标中心 邮编: 266101

t (86-532) 68999888 www.sgsgroup.com.cn
t (86-532) 68999888 sgs.china@sgs.com

Member of the SGS Group (SGS SA)